



Turn to the experts

Carrier VRF Retail Price List 2024

Effective from 1st May 2024 - GBP Edition





Turn to the experts

Contents

XCT-7 Mini VRF Outdoor Units	1 - 3
XCT-7 VRF Outdoor Units	4 - 22
VRF Heat Recovery Valve Boxes	23 - 24
VRF DX Kits	25 - 43
VRF Indoor Units	44 - 59
Accessories	60 - 63
Contact Us	65



Turn to the experts



Mini XCT7 - VRF 2-Pipe Heat Pump Outdoor Unit 1ph

Outdoor Unit		38VS125C7SHQEE	38VS140C7SHQEE	38VS12117SHQEE	38VS14017SHQEE	38VS15517SHQEE
Outdoor Unit Retail Price		£3,137	£3,315	£3,632	£4,101	£4,407

Rated Cooling capacity	kW	12.1	14.0	12.1	14.0	15.5
Rated Heating capacity	kW	14.0	15.5	14.2	16.0	18.0
SEER - SCOP - Energy Label	kW/kW	4.90 - 3.50 - 193.0/137.0	4.85 - 3.55 - 191.0/139.0	6.82 - 4.05 - 269.8/159.0	6.65 - 4.11 - 263.0/161.4	6.80 - 4.05 - 269.0/159.0
Sound Pressure Level	dB(A)	60	62	57	58	59
Dimensions(HxWxD)	mm	950x965x370	950x965x370	1340x950x370	1340x950x370	1340x950x370
Weight	kg	90	90	108	108	108
Suggested Power supply OD	V-ph-Hz-A	220/240-1-50 - 32	220/240-1-50 - 32	220/240-1-50 - 32	220/240-1-50 - 32	220/240-1-50 - 32
Pipe connections (Gas - Liquid)	inch	5/8 - 3/8	5/8 - 3/8	5/8 - 3/8	5/8 - 3/8	5/8 - 3/8
Max pipe length - Maximum lift above/below	m	70 - 30/20	70 - 30/20	150 - 50/40	150 - 50/40	150 - 50/40
Refrigerant charge R410a	kg	3.3	3.3	4.0	4.0	4.0

XCT-7

MINI XCT7

1



Turn to the experts



Mini XCT7 - VRF 2-Pipe Heat Pump Outdoor Unit 3ph

Outdoor Unit		38VS121173HQEE	38VS140173HQEE	38VS155173HQEE
Outdoor Unit Retail Price		£3,703	£4,203	£4,437

Rated Cooling capacity	kW	12.1	14.0	15.5
Rated Heating capacity	kW	14.2	16.0	18.0
SEER - SCOP - Energy Label	kW/kW	6.82 - 4.05 - 269.8/159.0	6.65 - 4.11 - 263.0/161.4	6.80 - 4.05 - 269.0/159.0
Sound Pressure Level	dB(A)	57	58	59
Dimensions(HxWxD)	mm	1340x950x370	1340x950x370	1340x950x370
Weight	kg	108	108	108
Suggested Power supply OD	V-ph-Hz-A	380/415-3-50 - 20	380/415-3-50 - 20	380/415-3-50 - 20
Pipe connections (Gas - Liquid)	inch	5/8 - 3/8	5/8 - 3/8	5/8 - 3/8
Max pipe length - Maximum lift above/below	m	150 - 50/40	150 - 50/40	150 - 50/40
Refrigerant charge R410a	kg	4.0	4.0	4.0



Turn to the experts



Mini XCT7 - VRF 2-Pipe Heat Pump Outdoor Unit 3ph (Continued)

Outdoor Unit		38VS226174HQEE	38VS280174HQEE	38VS335174HQEE
Outdoor Unit Retail Price		£5,508	£5,702	£5,998

Rated Cooling capacity	kW	22.6	28.0	31.5
Rated Heating capacity	kW	25.0	32.0	35.0
SEER - SCOP - Energy Label	kW/kW	7.67 - 4.05 - 303.8/159.0	7.65 - 4.16 - 303.0/163.4	7.47 - 4.21 - 295.8/165.4
Sound Pressure Level	dB(A)	65	66	67
Dimensions(HxWxD)	mm	1636x1050x400	1636x1050x400	1636x1050x400
Weight	kg	149	149	149
Suggested Power supply OD	V-ph-Hz-A	380/415-3-50 - 40	380/415-3-50 - 40	380/415-3-50 - 40
Pipe connections (Gas - Liquid)	inch	3/4 - 3/8	7/8 - 3/8	1 1/8 - 1/2
Max pipe length - Maximum lift above/below	m	150 - 50/40	150 - 50/40	150 - 50/40
Refrigerant charge R410a	kg	5.1	5.1	5.1





Turn to the experts



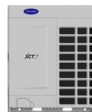
XCT7 - VRF 2-Pipe Heat Pump Outdoor Unit

Outdoor Unit		38VT008173HQEE	38VT010173HQEE	38VT012173HQEE	38VT014173HQEE	38VT016173HQEE
Outdoor Unit Retail Price		£6,885	£7,355	£8,742	£9,629	£10,812

Rated Cooling capacity	kW	25.2	28.0	33.5	40.0	45.0
Rated Heating capacity	kW	28.0	31.5	37.5	45.0	50.0
SEER - SCOP - Energy Label	kW/kW	7.25 - 4.41 - 287.0/173.4	7.09 - 4.31 - 280.6/169.4	6.69 - 4.31 - 264.6/169.4	6.60 - 4.12 - 261.0/161.8	6.36 - 4.05 - 251.4/159.0
Sound Pressure Level	dB(A)	56	56	59	59	60
Dimensions(HxWxD)	mm	1690x980x750	1690x980x750	1690x980x750	1690x980x750	1690x980x750
Weight	kg	224	224	224	244	244
Suggested Power supply OD	V-ph-Hz-A	380/415-3-50 - 25	380/415-3-50 - 25	380/415-3-50 - 32	380/415-3-50 - 40	380/415-3-50 - 40
Pipe connections (Gas - Liquid)	inch	3/4 - 3/8	7/8 - 3/8	1 1/8 - 1/2	1 1/8 - 1/2	1 1/8 - 1/2
Max pipe length - Maximum lift above/below	m	220 - 110/90	220 - 110/90	220 - 110/90	220 - 110/90	220 - 110/90
Refrigerant charge R410a	kg	8.5	8.5	8.5	10.0	10.0



Turn to the experts



XCT7 - VRF 2-Pipe Heat Pump Outdoor Unit (Continued)

Outdoor Unit		38VT018173HQEE	38VT020173HQEE	38VT022173HQEE	38VT024173HQEE	38VT026173HQEE
Outdoor Unit Retail Price		£11,812	£12,608	£13,413	£14,270	£16,290

Rated Cooling capacity	kW	50.4	56.0	61.5	68.0	73.5
Rated Heating capacity	kW	56.5	61.5	69.0	73.0	82.5
SEER - SCOP - Energy Label	kW/kW	6.78 - 4.15 - 268.2/163.0	6.75 - 4.2 - 267.0/165.0	6.54 - 4.21 - 258.6/165.4	5.83 - 4.17 - 230.2/163.8	4.90 - 3.5 - 193.0/137.0
Sound Pressure Level	dB(A)	61	61	61	62	62
Dimensions(HxWxD)	mm	1690x1410x750	1690x1410x750	1690x1410x750	1690x1410x750	1690x1410x750
Weight	kg	287	370	370	370	370
Suggested Power supply OD	V-ph-Hz-A	380/415-3-50 - 50	380/415-3-50 - 63	380/415-3-50 - 63	380/415-3-50 - 63	380/415-3-50 - 63
Pipe connections (Gas - Liquid)	inch	1 1/8 - 5/8	1 1/8 - 5/8	1 1/8 - 5/8	1 1/8 - 5/8	1 1/8 - 5/8
Max pipe length - Maximum lift above/below	m	220 - 110/90	220 - 110/90	220 - 110/90	220 - 110/90	220 - 110/90
Refrigerant charge R410a	kg	10.0	10.0	10.0	10.0	10.0

XCT-7

XCT7



Turn to the experts



XCT7 - VRF 2-Pipe Heat Pump Outdoor Unit

Outdoor Unit		38VT028S73HQEE	38VT030S73HQEE	38VT032S73HQEE	38VT034S73HQEE	38VT036S73HQEE	38VT038S73HQEE
Outdoor 1		38VT014173HQEE	38VT014173HQEE	38VT016173HQEE	38VT016173HQEE	38VT018173HQEE	38VT018173HQEE
Outdoor 2		38VT014173HQEE	38VT016173HQEE	38VT016173HQEE	38VT018173HQEE	38VT018173HQEE	38VT020173HQEE
System Retail Price		£19,258	£20,441	£21,624	£22,624	£23,624	£24,420
Rated Cooling capacity	kW	80.0	85.0	90.0	95.4	100.8	106.4
Rated Heating capacity	kW	90.0	95.0	100.0	106.5	113.0	118.0
SEER - SCOP - Energy Label	kW/kW	6.6 - 4.12 - 261.0/161.8	6.36 - 4.05 - 251.4/159.0	6.36 - 4.05 - 251.4/159.0	6.36 - 4.05 - 251.4/159.0	6.78 - 4.15 - 268.2/163.0	6.75 - 4.15 - 267.0/163.0
Sound Pressure Level	dB(A)	62	63	63	64	64	64
Dimensions(HxWxD)	mm	1690x1360x750	1690x1360x750	1690x1360x750	1690x2390x750	1690x2820x750	1690x2820x750
Weight	kg	224+224	224+224	224+224	244+287	287+287	287+370
Suggested Power supply OD	V-ph-Hz-A	380/415-3-50 - 40+40	380/415-3-50 - 40+40	380/415-3-50 - 40+40	380/415-3-50 - 40+50	380/415-3-50 - 50+50	380/415-3-50 - 50+63
Pipe connections (Gas - Liquid)	inch	1 1/8 - 5/8	1 3/8 - 3/4	1 3/8 - 3/4	1 3/8 - 3/4	1 5/8 - 3/4	1 5/8 - 3/4
Max pipe length - Maximum lift above/below	m	220 - 110/90		220 - 110/90	220 - 110/90	220 - 110/90	220 - 110/90
Refrigerant charge R410a	kg	10+10	10+10	10+10	10+10	10+10	10+10



Turn to the experts



XCT7 - VRF 2-Pipe Heat Pump Outdoor Unit (Continued)

Outdoor Unit		38VT040S73HQEE	38VT042S73HQEE	38VT044S73HQEE	38VT046S73HQEE	38VT048S73HQEE	38VT050S73HQEE
Outdoor 1		38VT020173HQEE	38VT020173HQEE	38VT022173HQEE	38VT022173HQEE	38VT024173HQEE	38VT024173HQEE
Outdoor 2		38VT020173HQEE	38VT022173HQEE	38VT022173HQEE	38VT024173HQEE	38VT024173HQEE	38VT026173HQEE
System Retail Price		£25,216	£26,021	£26,826	£27,683	£28,540	£30,560

Rated Cooling capacity	kW	112.0	117.5	123.0	129.5	136.0	141.5
Rated Heating capacity	kW	123.0	130.5	138.0	142.0	146.0	155.5
SEER - SCOP - Energy Label	kW/kW	6.75 - 4.20 - 267.0/165.0	6.54 - 4.20 - 258.6/165.0	6.54 - 4.21 - 258.6/165.4	5.83 - 4.17 - 230.2/163.8	5.83 - 4.17 - 230.2/163.8	4.90 - 3.48 - 193.0/136.2
Sound Pressure Level	dB(A)	64	64	64	65	65	65
Dimensions(HxWxD)	mm	1690x2820x750	1690x2820x750	1690x2820x750	1690x2820x750	1690x2820x750	1690x2820x750
Weight	kg	370+370	370+370	370+370	370+370	370+370	370+370
Suggested Power supply OD	V-ph-Hz-A	380/415-3-50 - 63+63	380/415-3-50 - 63+63	380/415-3-50 - 63+63	380/415-3-50 - 63+63	380/415-3-50 - 63+63	380/415-3-50 - 63+63
Pipe connections (Gas - Liquid)	inch	1 5/8 - 3/4	1 5/8 - 3/4	1 5/8 - 3/4	1 5/8 - 3/4	1 5/8 - 3/4	1 5/8 - 3/4
Max pipe length - Maximum lift above/below	m	220 - 110/90	220 - 110/90	220 - 110/90	220 - 110/90	220 - 110/90	220 - 110/90
Refrigerant charge R410a	kg	10+10	10+10	10+10	10+10	10+10	10+10





Turn to the experts



XCT7 - VRF 2-Pipe Heat Pump Outdoor Unit (Continued)

Outdoor Unit		38VT052S73HQEE	38VT054S73HQEE	38VT056S73HQEE	38VT058S73HQEE	38VT060S73HQEE
Outdoor 1		38VT026173HQEE	38VT018173HQEE	38VT018173HQEE	38VT018173HQEE	38VT020173HQEE
Outdoor 2		38VT026173HQEE	38VT018173HQEE	38VT018173HQEE	38VT020173HQEE	38VT020173HQEE
Outdoor 3		-	38VT018173HQEE	38VT020173HQEE	38VT020173HQEE	38VT020173HQEE
System Retail Price		£32,580	£35,436	£36,232	£37,028	£37,824

Rated Cooling capacity	kW	147.0	151.2	156.8	162.4	168.0
Rated Heating capacity	kW	165.0	169.5	174.5	179.5	184.5
SEER - SCOP - Energy Label	kW/kW	4.90 - 3.48 - 193.0/136.2	6.78 - 4.15 - 268.2/163.0	6.75 - 4.15 - 267.0/163.0	6.75 - 4.15 - 267.0/163.0	6.75 - 4.20 - 267.0/165.0
Sound Pressure Level	dB(A)	65	66	66	66	66
Dimensions(HxWxD)	mm	1690x2820x750	1690x4230x750	1690x4230x750	1690x4230x750	1690x4230x750
Weight	kg	370+370	287+287+287	287+287+370	287+370+370	370+370+370
Suggested Power supply OD	V-ph-Hz-A	380/415-3-50 - 63+63	380/415-3-50 - 50+50+50	380/415-3-50 - 50+50+63	380/415-3-50 - 50+63+63	380/415-3-50 - 63+63+63
Pipe connections (Gas - Liquid)	inch	1 5/8 - 3/4	1 5/8 - 3/4	1 5/8 - 3/4	1 5/8 - 3/4	1 5/8 - 3/4
Max pipe length - Maximum lift above/below	m	220 - 110/90	220 - 110/90	220 - 110/90	220 - 110/90	220 - 110/90
Refrigerant charge R410a	kg	10+10	10+10+10	10+10+10	10+10+10	10+10+10



Turn to the experts



XCT7 - VRF 2-Pipe Heat Pump Outdoor Unit (Continued)

Outdoor Unit		38VT062S73HQEE	38VT064S73HQEE	38VT066S73HQEE	38VT068S73HQEE	38VT070S73HQEE
Outdoor 1		38VT022173HQEE	38VT022173HQEE	38VT022173HQEE	38VT022173HQEE	38VT022173HQEE
Outdoor 2		38VT020173HQEE	38VT022173HQEE	38VT022173HQEE	38VT022173HQEE	38VT024173HQEE
Outdoor 3		38VT020173HQEE	38VT020173HQEE	38VT022173HQEE	38VT024173HQEE	38VT024173HQEE
System Retail Price		£38,629	£39,434	£40,239	£41,096	£41,953
Rated Cooling capacity	kW	173.5	179.0	184.5	191.0	197.5
Rated Heating capacity	kW	192.0	199.5	207.0	211.0	215.0
SEER - SCOP - Energy Label	kW/kW	6.54 - 4.20 - 258.6/165.0	6.54 - 4.20 - 258.6/165.0	6.54 - 4.21 - 258.6/165.4	5.83 - 4.17 - 230.2/163.8	5.83 - 4.17 - 230.2/163.8
Sound Pressure Level	dB(A)	66	66	66	66	66
Dimensions(HxWxD)	mm	1690x4230x750	1690x4230x750	1690x4230x750	1690x4230x750	1690x4230x750
Weight	kg	370+370+370	370+370+370	370+370+370	370+370+370	370+370+370
Suggested Power supply OD	V-ph-Hz-A	380/415-3-50 - 63+63+63	380/415-3-50 - 63+63+63	380/415-3-50 - 63+63+63	380/415-3-50 - 63+63+63	380/415-3-50 - 63+63+63
Pipe connections (Gas - Liquid)	inch	1 5/8 - 3/4	1 5/8 - 3/4	1 5/8 - 3/4	1 5/8 - 7/8	1 5/8 - 7/8
Max pipe length - Maximum lift above/below	m	220 - 110/90	220 - 110/90	220 - 110/90	220 - 110/90	220 - 110/90
Refrigerant charge R410a	kg	10+10+10	10+10+10	10+10+10	10+10+10	10+10+10





Turn to the experts



XCT7 - VRF 2-Pipe Heat Pump Outdoor Unit (Continued)

Outdoor Unit		38VT072S73HQEE	38VT074S73HQEE	38VT076S73HQEE	38VT078S73HQEE	38VT080S73HQEE
Outdoor 1		38VT024173HQEE	38VT026173HQEE	38VT026173HQEE	38VT026173HQEE	38VT020173HQEE
Outdoor 2		38VT024173HQEE	38VT024173HQEE	38VT026173HQEE	38VT026173HQEE	38VT020173HQEE
Outdoor 3		38VT024173HQEE	38VT024173HQEE	38VT024173HQEE	38VT026173HQEE	38VT020173HQEE
Outdoor 4		-	-	-	-	38VT020173HQEE
System Retail Price		£42,810	£44,830	£46,850	£48,870	£50,432

Rated Cooling capacity	kW	204.0	209.5	215.0	220.5	224.0
Rated Heating capacity	kW	219.0	228.5	238.0	247.5	246.0
SEER - SCOP - Energy Label	kW/kW	5.83 - 4.17 - 230.2/163.8	4.90 - 3.48 - 193.0/136.2	4.90 - 3.48 - 193.0/136.2	4.90 - 3.48 - 193.0/136.2	6.75 - 4.20 - 267.0/165.0
Sound Pressure Level	dB(A)	67	67	67	67	67
Dimensions(HxWxD)	mm	1690x4230x750	1690x4230x750	1690x4230x750	1690x4230x750	1690x5640x750
Weight	kg	370+370+370	370+370+370	370+370+370	370+370+370	370+370+370+370
Suggested Power supply OD	V-ph-Hz-A	380/415-3-50 - 63+63+63	380/415-3-50 - 63+63+63	380/415-3-50 - 63+63+63	380/415-3-50 - 63+63+63	380/415-3-50 - 63+63+63+63
Pipe connections (Gas - Liquid)	inch	1 5/8 - 7/8	1 5/8 - 7/8	1 5/8 - 7/8	1 5/8 - 7/8	1 5/8 - 7/8
Max pipe length - Maximum lift above/below	m	220 - 110/90	220 - 110/90	220 - 110/90	220 - 110/90	220 - 110/90
Refrigerant charge R410a	kg	10+10+10	10+10+10	10+10+10	10+10+10	10+10+10+10



Turn to the experts



XCT7 - VRF 2-Pipe Heat Pump Outdoor Unit (Continued)

Outdoor Unit		38VT082S73HQEE	38VT084S73HQEE	38VT086S73HQEE	38VT088S73HQEE
Outdoor 1		38VT020173HQEE	38VT020173HQEE	38VT020173HQEE	38VT022173HQEE
Outdoor 2		38VT020173HQEE	38VT020173HQEE	38VT022173HQEE	38VT022173HQEE
Outdoor 3		38VT020173HQEE	38VT022173HQEE	38VT022173HQEE	38VT022173HQEE
Outdoor 4		38VT022173HQEE	38VT022173HQEE	38VT022173HQEE	38VT022173HQEE
System Retail Price		£51,237	£52,042	£52,847	£53,652
Rated Cooling capacity	kW	229.5	235.0	240.5	246.0
Rated Heating capacity	kW	253.5	261.0	268.5	276.0
SEER - SCOP - Energy Label	kW/kW	6.54 - 4.20 - 258.6/165.0	6.54 - 4.20 - 258.6/165.0	6.54 - 4.20 - 258.6/165.0	6.54 - 4.21 - 258.6/165.4
Sound Pressure Level	dB(A)	67	67	67	67
Dimensions(HxWxD)	mm	1690x5640x750	1690x5640x750	1690x5640x750	1690x5640x750
Weight	kg	370+370+370+370	370+370+370+370	370+370+370+370	370+370+370+370
Suggested Power supply OD	V-ph-Hz-A	380/415-3-50 - 63+63+63+63	380/415-3-50 - 63+63+63+63	380/415-3-50 - 63+63+63+63	380/415-3-50 - 63+63+63+63
Pipe connections (Gas - Liquid)	inch	1 5/8 - 7/8	1 5/8 - 7/8	2 1/8 - 1 1/8	2 1/8 - 1 1/8
Max pipe length - Maximum lift above/below	m	220 - 110/90	220 - 110/90	220 - 110/90	220 - 110/90
Refrigerant charge R410a	kg	10+10+10+10	10+10+10+10	10+10+10+10	10+10+10+10





Turn to the experts



XCT7 - VRF 2-Pipe Heat Pump Outdoor Unit (Continued)

Outdoor Unit		38VT090S73HQEE	38VT092S73HQEE	38VT094S73HQEE	38VT096S73HQEE
Outdoor 1		38VT024173HQEE	38VT024173HQEE	38VT024173HQEE	38VT024173HQEE
Outdoor 2		38VT022173HQEE	38VT024173HQEE	38VT024173HQEE	38VT024173HQEE
Outdoor 3		38VT022173HQEE	38VT022173HQEE	38VT024173HQEE	38VT024173HQEE
Outdoor 4		38VT022173HQEE	38VT022173HQEE	38VT022173HQEE	38VT024173HQEE
System Retail Price		£54,509	£55,366	£56,223	£57,080
Rated Cooling capacity	kW	252.5	259.0	265.5	272.0
Rated Heating capacity	kW	280.0	284.0	288.0	292.0
SEER - SCOP - Energy Label	kW/kW	5.83 - 4.17 - 230.2/163.8	5.83 - 4.17 - 230.2/163.8	5.83 - 4.17 - 230.2/163.8	5.83 - 4.17 - 230.2/163.8
Sound Pressure Level	dB(A)	67	68	68	68
Dimensions(HxWxD)	mm	1690x5640x750	1690x5640x750	1690x5640x750	1690x5640x750
Weight	kg	370+370+370+370	370+370+370+370	370+370+370+370	370+370+370+370
Suggested Power supply OD	V-ph-Hz-A	380/415-3-50 - 63+63+63+63	380/415-3-50 - 63+63+63+63	380/415-3-50 - 63+63+63+63	380/415-3-50 - 63+63+63+63
Pipe connections (Gas - Liquid)	inch	2 1/8 - 1 1/8	2 1/8 - 1 1/8	2 1/8 - 1 1/8	2 1/8 - 1 1/8
Max pipe length - Maximum lift above/below	m	220 - 110/90	220 - 110/90	220 - 110/90	220 - 110/90
Refrigerant charge R410a	kg	10+10+10+10	10+10+10+10	10+10+10+10	10+10+10+10



Turn to the experts



XCT7 - VRF 2-Pipe Heat Pump Outdoor Unit (Continued)

Outdoor Unit		38VT098S73HQEE	38VT100S73HQEE	38VT102S73HQEE	38VT104S73HQEE
Outdoor 1		38VT026173HQEE	38VT026173HQEE	38VT026173HQEE	38VT026173HQEE
Outdoor 2		38VT024173HQEE	38VT026173HQEE	38VT026173HQEE	38VT026173HQEE
Outdoor 3		38VT024173HQEE	38VT024173HQEE	38VT026173HQEE	38VT026173HQEE
Outdoor 4		38VT024173HQEE	38VT024173HQEE	38VT024173HQEE	38VT026173HQEE
System Retail Price		£59,100	£61,120	£63,140	£65,160

Rated Cooling capacity	kW	277.5	283.0	288.5	294.0
Rated Heating capacity	kW	301.5	311.0	320.5	330.0
SEER - SCOP - Energy Label	kW/kW	4.90 - 3.48 - 193.0/136.2	4.90 - 3.48 - 193.0/136.2	4.90 - 3.48 - 193.0/136.2	4.90 - 3.48 - 193.0/136.2
Sound Pressure Level	dB(A)	68	68	68	68
Dimensions(HxWxD)	mm	1690x5640x750	1690x5640x750	1690x5640x750	1690x5640x750
Weight	kg	370+370+370+370	370+370+370+370	370+370+370+370	370+370+370+370
Suggested Power supply OD	V-ph-Hz-A	380/415-3-50 - 63+63+63+63	380/415-3-50 - 63+63+63+63	380/415-3-50 - 63+63+63+63	380/415-3-50 - 63+63+63+63
Pipe connections (Gas - Liquid)	inch	2 1/8 - 1 1/8	2 1/8 - 1 1/8	2 1/8 - 1 1/8	2 1/8 - 1 1/8
Max pipe length - Maximum lift above/below	m	220 - 110/90	220 - 110/90	220 - 110/90	220 - 110/90
Refrigerant charge R410a	kg	10+10+10+10	10+10+10+10	10+10+10+10	10+10+10+10





Turn to the experts



XCT7 - VRF 3-Pipe Heat Recovery Outdoor Unit

Outdoor Unit		38VT008173RQEE	38VT010173RQEE	38VT012173RQEE	38VT014173RQEE
Outdoor Unit Retail Price		£7,365	£7,599	£9,803	£10,282
Rated Cooling capacity	kW	22.4	28.0	33.5	40.0
Rated Heating capacity	kW	25.0	31.5	37.5	45.0
SEER - SCOP - Energy Label	kW/kW	6.12 - 3.82 - 241.8/149.8	6.68 - 3.94 - 264.2/154.6	6.46 - 3.99 - 255.4/156.6	6.37 - 3.86 - 251.8/151.4
Sound Pressure Level	dB(A)	57	58	60	61
Dimensions(HxWxD)	mm	1690x980x750	1690x980x750	1690x980x750	1690x980x750
Weight	kg	246	246	257	257
Suggested Power supply OD	V-ph-Hz-A	380/415-3-50 - 25	380/415-3-50 - 25	380/415-3-50 - 32	380/415-3-50 - 40
Pipe connections (Suction - Hot Gas - Liquid)	inch	3/4 - 3/4 - 3/8	7/8 - 3/4 - 3/8	1 1/8 - 7/8 - 1/2	1 1/8 - 7/8 - 1/2
Max pipe length - Maximum lift above/below	m	220 - 110/90	220 - 110/90	220 - 110/90	220 - 110/90
Refrigerant charge R410a	kg	10.0	10.0	10.0	10.0



Turn to the experts



XCT7 - VRF 3-Pipe Heat Recovery Outdoor Unit (Continued)

Outdoor Unit		38VT016173RQEE	38VT018173RQEE	38VT020173RQEE	38VT022173RQEE
Outdoor Unit Retail Price		£11,945	£12,393	£13,250	£16,218
Rated Cooling capacity	kW	45.0	50.0	56.0	63.0
Rated Heating capacity	kW	50.0	56.0	61.5	69.0
SEER - SCOP - Energy Label	kW/kW	6.86 - 4.21 - 271.4/165.4	6.48 - 3.99 - 256.2/156.6	5.90 - 3.93 - 233.0/154.2	5.63 - 3.50 - 222.2/137.0
Sound Pressure Level	dB(A)	62	63	63	64
Dimensions(HxWxD)	mm	1690x1410x750	1690x1410x750	1690x1410x750	1690x1410x750
Weight	kg	366	366	375	375
Suggested Power supply OD	V-ph-Hz-A	380/415-3-50 - 40	380/415-3-50 - 50	380/415-3-50 - 63	380/415-3-50 - 63
Pipe connections (Suction - Hot Gas - Liquid)	inch	1 1/8 - 1 1/8 - 1/2	1 1/8 - 1 1/8 - 5/8	1 1/8 - 1 1/8 - 5/8	1 1/8 - 1 1/8 - 5/8
Max pipe length - Maximum lift above/below	m	220 - 110/90	220 - 110/90	220 - 110/90	220 - 110/90
Refrigerant charge R410a	kg	10.0	10.0	10.0	10.0



Turn to the experts



XCT7 - VRF 3-Pipe Heat Recovery Outdoor Unit

Outdoor Unit		38VT024S73RQEE	38VT026S73RQEE	38VT028S73RQEE	38VT030S73RQEE	38VT032S73RQEE
Outdoor 1		38VT012173RQEE	38VT012173RQEE	38VT014173RQEE	38VT014173RQEE	38VT016173RQEE
Outdoor 2		38VT012173RQEE	38VT014173RQEE	38VT014173RQEE	38VT016173RQEE	38VT016173RQEE
System Retail Price		£19,606	£20,085	£20,564	£22,227	£23,890

Rated Cooling capacity	kW	67.0	73.5	80.0	85.0	90.0
Rated Heating capacity	kW	75.0	82.5	90.0	95.0	100.0
SEER - SCOP - Energy Label	kW/kW	6.46 - 3.99 - 255.4/156.6	6.37 - 3.86 - 251.8/151.4	6.37 - 3.86 - 251.8/151.4	6.37 - 3.86 - 251.8/151.4	6.86 - 4.21 - 271.4/165.4
Sound Pressure Level	dB(A)	63	64	64	65	65
Dimensions(HxWxD)	mm	1690x1960x750	1690x1960x750	1690x1960x750	1690x2390x750	1690x2820x750
Weight	kg	257+257	257+257	257+257	257+366	366+366
Suggested Power supply OD	V-ph-Hz-A	380/415-3-50 - 32+32	380/415-3-50 - 32+40	380/415-3-50 - 40+40	380/415-3-50 - 40+40	380/415-3-50 - 40+40
Pipe connections (Suction - Hot Gas - Liquid)	inch	1 1/8 - 1 1/8 - 5/8	1 1/8 - 1 1/8 - 5/8	1 1/8 - 1 1/8 - 5/8	1 3/8 - 1 1/8 - 3/4	1 3/8 - 1 1/8 - 3/4
Max pipe length - Maximum lift above/below	m	220 - 110/90	220 - 110/90	220 - 110/90	220 - 110/90	220 - 110/90
Refrigerant charge R410a	kg	10+10	10+10	10+10	10+10	10+10



Turn to the experts



XCT7 - VRF 3-Pipe Heat Recovery Outdoor Unit (Continued)

Outdoor Unit		38VT034S73RQEE	38VT036S73RQEE	38VT038S73RQEE	38VT040S73RQEE	38VT042S73RQEE
Outdoor 1		38VT016173RQEE	38VT018173RQEE	38VT018173RQEE	38VT020173RQEE	38VT020173RQEE
Outdoor 2		38VT018173RQEE	38VT018173RQEE	38VT020173RQEE	38VT020173RQEE	38VT022173RQEE
System Retail Price		£24,338	£24,786	£25,643	£26,500	£29,468

Rated Cooling capacity	kW	95.0	100.0	106.0	112.0	119.0
Rated Heating capacity	kW	106.0	112.0	117.5	123.0	130.5
SEER - SCOP - Energy Label	kW/kW	6.48 - 3.99 - 256.2/156.6	6.48 - 3.99 - 256.2/156.6	5.90 - 3.93 - 233.0/154.2	5.90 - 3.93 - 233.0/154.2	5.63 - 3.50 - 222.2/137.0
Sound Pressure Level	dB(A)	66	66	66	66	67
Dimensions(HxWxD)	mm	1690x2820x750	1690x2820x750	1690x2820x750	1690x2820x750	1690x2820x750
Weight	kg	366+366	366+366	366+375	375+375	375+375
Suggested Power supply OD	V-ph-Hz-A	380/415-3-50 - 40+50	380/415-3-50 - 50+50	380/415-3-50 - 50+63	380/415-3-50 - 63+63	380/415-3-50 - 63+63
Pipe connections (Suction - Hot Gas - Liquid)	inch	1 3/8 - 1 1/8 - 3/4	1 5/8 - 1 3/8 - 3/4	1 5/8 - 1 3/8 - 3/4	1 5/8 - 1 3/8 - 3/4	1 5/8 - 1 3/8 - 3/4
Max pipe length - Maximum lift above/below	m	220 - 110/90	220 - 110/90	220 - 110/90	220 - 110/90	220 - 110/90
Refrigerant charge R410a	kg	10+10	10+10	10+10	10+10	10+10



Turn to the experts



XCT7 - VRF 3-Pipe Heat Recovery Outdoor Unit (Continued)

Outdoor Unit		38VT044S73RQEE	38VT046S73RQEE	38VT048S73RQEE	38VT050S73RQEE	38VT052S73RQEE
Outdoor 1		38VT022173RQEE	38VT014173RQEE	38VT016173RQEE	38VT016173RQEE	38VT016173RQEE
Outdoor 2		38VT022173RQEE	38VT016173RQEE	38VT016173RQEE	38VT016173RQEE	38VT018173RQEE
Outdoor 3		-	38VT016173RQEE	38VT016173RQEE	38VT018173RQEE	38VT018173RQEE
System Retail Price		£32,436	£34,172	£35,835	£36,283	£36,731

Rated Cooling capacity	kW	126.0	130.0	135.0	140.0	145.0
Rated Heating capacity	kW	138.0	145.0	150.0	156.0	162.0
SEER - SCOP - Energy Label	kW/kW	5.63 - 3.50 - 222.2/137.0	6.37 - 3.86 - 251.8/151.4	6.86 - 4.21 - 271.4/165.4	6.48 - 3.99 - 256.2/156.6	6.48 - 3.99 - 256.2/156.6
Sound Pressure Level	dB(A)	67	66	67	67	67
Dimensions(HxWxD)	mm	1690x2820x750	1690x3800x750	1690x4230x750	1690x4230x750	1690x4230x750
Weight	kg	375+375	257+366+366	366+366+366	366+366+366	366+366+366
Suggested Power supply OD	V-ph-Hz-A	380/415-3-50 - 63+63	380/415-3-50 - 40+40+40	380/415-3-50 - 40+40+40	380/415-3-50 - 40+40+50	380/415-3-50 - 40+50+50
Pipe connections (Suction - Hot Gas - Liquid)	inch	1 5/8 - 1 3/8 - 3/4	1 5/8 - 1 3/8 - 3/4	1 5/8 - 1 3/8 - 3/4	1 5/8 - 1 3/8 - 3/4	1 5/8 - 1 3/8 - 3/4
Max pipe length - Maximum lift above/below	m	220 - 110/90	220 - 110/90	220 - 110/90	220 - 110/90	220 - 110/90
Refrigerant charge R410a	kg	10+10	10+10+10	10+10+10	10+10+10	10+10+10



Turn to the experts



XCT7 - VRF 3-Pipe Heat Recovery Outdoor Unit (Continued)

Outdoor Unit		38VT054S73RQEE	38VT056S73RQEE	38VT058S73RQEE	38VT060S73RQEE	38VT062S73RQEE
Outdoor 1		38VT018173RQEE	38VT018173RQEE	38VT018173RQEE	38VT020173RQEE	38VT020173RQEE
Outdoor 2		38VT018173RQEE	38VT018173RQEE	38VT020173RQEE	38VT020173RQEE	38VT020173RQEE
Outdoor 3		38VT018173RQEE	38VT020173RQEE	38VT020173RQEE	38VT020173RQEE	38VT022173RQEE
System Retail Price		£37,179	£38,036	£38,893	£39,750	£42,718

Rated Cooling capacity	kW	150.0	156.0	162.0	168.0	175.0
Rated Heating capacity	kW	168.0	173.5	179.0	184.5	192.0
SEER - SCOP - Energy Label	kW/kW	6.48 - 3.99 - 256.2/156.6	5.90 - 3.93 - 233.0/154.2	5.90 - 3.93 - 233.0/154.2	5.90 - 3.93 - 233.0/154.2	5.63 - 3.50 - 222.2/137.0
Sound Pressure Level	dB(A)	68	68	68	68	68
Dimensions(HxWxD)	mm	1690x4230x750	1690x4230x750	1690x4230x750	1690x4230x750	1690x4230x750
Weight	kg	366+366+366	366+366+375	366+375+375	375+375+375	375+375+375
Suggested Power supply OD	V-ph-Hz-A	380/415-3-50 - 50+50+50	380/415-3-50 - 50+50+63	380/415-3-50 - 50+63+63	380/415-3-50 - 63+63+63	380/415-3-50 - 63+63+63
Pipe connections (Suction - Hot Gas - Liquid)	inch	1 5/8 - 1 3/8 - 3/4	1 5/8 - 1 3/8 - 3/4	1 5/8 - 1 5/8 - 3/4	1 5/8 - 1 5/8 - 3/4	1 5/8 - 1 5/8 - 3/4
Max pipe length - Maximum lift above/below	m	220 - 110/90	220 - 110/90	220 - 110/90	220 - 110/90	220 - 110/90
Refrigerant charge R410a	kg	10+10+10	10+10+10	10+10+10	10+10+10	10+10+10





Turn to the experts



XCT7 - VRF 3-Pipe Heat Recovery Outdoor Unit (Continued)

Outdoor Unit		38VT064S73RQEE	38VT066S73RQEE	38VT068S73RQEE	38VT070S73RQEE	38VT072S73RQEE
Outdoor 1		38VT020173RQEE	38VT022173RQEE	38VT016173RQEE	38VT016173RQEE	38VT018173RQEE
Outdoor 2		38VT022173RQEE	38VT022173RQEE	38VT016173RQEE	38VT018173RQEE	38VT018173RQEE
Outdoor 3		38VT022173RQEE	38VT022173RQEE	38VT018173RQEE	38VT018173RQEE	38VT018173RQEE
Outdoor 4		-	-	38VT018173RQEE	38VT018173RQEE	38VT018173RQEE
System Retail Price		£45,686	£48,654	£48,676	£49,124	£49,572

Rated Cooling capacity	kW	182.0	189.0	190.0	195.0	200.0
Rated Heating capacity	kW	199.5	207.0	212.0	218.0	224.0
SEER - SCOP - Energy Label	kW/kW	5.63 - 3.50 - 222.2/137.0	5.63 - 3.50 - 222.2/137.0	6.48 - 3.99 - 256.2/156.6	6.48 - 3.99 - 256.2/156.6	6.48 - 3.99 - 256.2/156.6
Sound Pressure Level	dB(A)	68	69	69	69	69
Dimensions(HxWxD)	mm	1690x4230x750	1690x4230x750	1690x5640x750	1690x5640x750	1690x5640x750
Weight	kg	375+375+375	375+375+375	366+366+366+366	366+366+366+366	366+366+366+366
Suggested Power supply OD	V-ph-Hz-A	380/415-3-50 - 63+63+63	380/415-3-50 - 63+63+63	380/415-3-50 - 40+40+50+50	380/415-3-50 - 40+50+50+50	380/415-3-50 - 50+50+50+50
Pipe connections (Suction - Hot Gas - Liquid)	inch	1 5/8 - 1 5/8 - 3/4	1 5/8 - 1 5/8 - 3/4	1 5/8 - 1 5/8 - 7/8	1 5/8 - 1 5/8 - 7/8	1 5/8 - 1 5/8 - 7/8
Max pipe length - Maximum lift above/below	m	220 - 110/90	220 - 110/90	220 - 110/90	220 - 110/90	220 - 110/90
Refrigerant charge R410a	kg	10+10+10	10+10+10	10+10+10+10	10+10+10+10	10+10+10+10



Turn to the experts



XCT7 - VRF 3-Pipe Heat Recovery Outdoor Unit (Continued)

Outdoor Unit		38VT074S73RQEE	38VT076S73RQEE	38VT078S73RQEE	38VT080S73RQEE
Outdoor 1		38VT018173RQEE	38VT018173RQEE	38VT018173RQEE	38VT020173RQEE
Outdoor 2		38VT018173RQEE	38VT018173RQEE	38VT020173RQEE	38VT020173RQEE
Outdoor 3		38VT018173RQEE	38VT020173RQEE	38VT020173RQEE	38VT020173RQEE
Outdoor 4		38VT020173RQEE	38VT020173RQEE	38VT020173RQEE	38VT020173RQEE
System Retail Price		£50,429	£51,286	£52,143	£53,000

Rated Cooling capacity	kW	206.0	212.0	218.0	224.0
Rated Heating capacity	kW	229.5	235.0	240.5	246.0
SEER - SCOP - Energy Label	kW/kW	5.90 - 3.93 - 233.0/154.2	5.90 - 3.93 - 233.0/154.2	5.90 - 3.93 - 233.0/154.2	5.90 - 3.93 - 233.0/154.2
Sound Pressure Level	dB(A)	69	69	69	69
Dimensions(HxWxD)	mm	1690x5640x750	1690x5640x750	1690x5640x750	1690x5640x750
Weight	kg	366+366+366+375	366+366+375+375	366+375+375+375	375+375+375+375
Suggested Power supply OD	V-ph-Hz-A	380/415-3-50 - 50+50+50+63	380/415-3-50 - 50+50+63+63	380/415-3-50 - 50+63+63+63	380/415-3-50 - 63+63+63+63
Pipe connections (Suction - Hot Gas - Liquid)	inch	1 5/8 - 1 5/8 - 7/8	1 5/8 - 1 5/8 - 7/8	1 5/8 - 1 5/8 - 7/8	1 5/8 - 1 5/8 - 7/8
Max pipe length - Maximum lift above/below	m	220 - 110/90	220 - 110/90	220 - 110/90	220 - 110/90
Refrigerant charge R410a	kg	10+10+10+10	10+10+10+10	10+10+10+10	10+10+10+10





Turn to the experts



XCT7 - VRF 3-Pipe Heat Recovery Outdoor Unit (Continued)

Outdoor Unit		38VT082S73RQEE	38VT084S73RQEE	38VT086S73RQEE	38VT088S73RQEE
Outdoor 1		38VT020173RQEE	38VT020173RQEE	38VT020173RQEE	38VT022173RQEE
Outdoor 2		38VT020173RQEE	38VT020173RQEE	38VT022173RQEE	38VT022173RQEE
Outdoor 3		38VT020173RQEE	38VT022173RQEE	38VT022173RQEE	38VT022173RQEE
Outdoor 4		38VT022173RQEE	38VT022173RQEE	38VT022173RQEE	38VT022173RQEE
System Retail Price		£55,968	£58,936	£61,904	£64,872

Rated Cooling capacity	kW	231.0	238.0	245.0	252.0
Rated Heating capacity	kW	253.5	261.0	268.5	276.0
SEER - SCOP - Energy Label	kW/kW	5.63 - 3.50 - 222.2/137.0	5.63 - 3.50 - 222.2/137.0	5.63 - 3.50 - 222.2/137.0	5.63 - 3.50 - 222.2/137.0
Sound Pressure Level	dB(A)	69	70	70	70
Dimensions(HxWxD)	mm	1690x5640x750	1690x5640x750	1690x5640x750	1690x5640x750
Weight	kg	375+375+375+375	375+375+375+375	375+375+375+375	375+375+375+375
Suggested Power supply OD	V-ph-Hz-A	380/415-3-50 - 63+63+63+63	380/415-3-50 - 63+63+63+63	380/415-3-50 - 63+63+63+63	380/415-3-50 - 63+63+63+63
Pipe connections (Suction - Hot Gas - Liquid)	inch	1 5/8 - 1 5/8 - 7/8	1 5/8 - 1 5/8 - 7/8	2 1/8 - 1 5/8 - 1 1/8	2 1/8 - 1 5/8 - 1 1/8
Max pipe length - Maximum lift above/below	m	220 - 110/90	220 - 110/90	220 - 110/90	220 - 110/90
Refrigerant charge R410a	kg	10+10+10+10	10+10+10+10	10+10+10+10	10+10+10+10



Turn to the experts



VRF Heat Recovery - Single Valve Boxes

BS Box		40VV00417FRQEE	40VV00717FRQEE	40VV01017FRQEE
BS Box Retail Price		£679	£847	£1,071
Height x width x depth	mm	277 x 200 x 388	277 x 200 x 388	277 x 200 x 388
Weight	kg	9	9	9
Max. connectable indoor units		5	8	8
Max. indoor capacity	kW	11.2	11.2 < 18	18 < 28
Max. pipe length from joint including valve box	m	30	30	30
Suggested Power supply	V-ph-Hz-A	220/240-1-50 - 6	220/240-1-50 - 6	220/240-1-50 - 6



Turn to the experts



VRF Heat Recovery - Multi Valve Boxes

BS Box		40VV01647FRQEE
BS Box Retail Price		£3,042
Height x width x depth	mm	421 x 300 x 405
Weight	kg	19
Number of ports		4
Max. connectable indoor units per port		5
Max. connectable indoor units		20
Max. pipe length from joint including valve box single port	m	30
Max. pipe length from joint including valve box all ports	m	120
Max IDU capacity	kW	45
Suggested Power supply	V-ph-Hz-A	220/240-1-50 - 6



Turn to the experts



VRF DX Kits - DDC Type

AHU Kit	DDC	40VA003D7FAQEE	40VA005D7FAQEE	40VA010D7FAQEE	40VA020D7FAQEE	40VA026D7FAQEE
Retail Price		£694	£684	£735	£862	£883
Dimensions (HxWxL)	mm	260x165x420	260x165x420	260x165x420	260x165x420	260x165x420
Weight	kg	6	6	6	7	7
Connected AHU Capacity	kW	3.5 x 7 (1-3HP)	7 x 14 (3-5HP)	14 x 28 (5-10HP)	28 x 56 (10-20HP)	56 x 73 (20-26HP)
Airflow Min / Max	m ³ /h	520 / 1950	720 / 3750	1200 / 8250	2600 / 16500	4800 / 21000
Internal Volume Min / Max	L	1.01 / 2.16	1.51 / 4.32	2.28 / 8.80	4.53 / 16.13	8.18 / 20.16
Max pipe length between outdoor and DX Kit	m	*220	*220	*220	*220	*220
Max pipe length between DX Kit and AHU	m	5	5	5	5	5
Pipe Connections Liquid	inch	3/8 - 1/4	3/8 - 1/4	3/8 - 1/4	1/2 - 5/8	1/2 - 5/8
Pipe Connections Gas	inch	3/8	3/8	3/8	1/2	1/2
Suggested Power supply	V-ph-Hz-A	220/240-1-50 - 6	220/240-1-50 - 6	220/240-1-50 - 6	220/240-1-50 - 6	220/240-1-50 - 6

*Max. 150m Mini SD 2-Fan (4-12HP)





Turn to the experts



VRF DX Kits - DDC Type - Return Air +10H +14C

AHU Kit		40VA003D7FAQEE	40VA005D7FAQEE	40VA005D7FAQEE	40VA010D7FAQEE	40VA010D7FAQEE	40VA010D7FAQEE
Retail Price		£694	£684	£684	£735	£735	£735
Outdoor Capacity	HP	3	4	5	6	8	10
Valve Boxes	No.	1	1	1	1	1	1
Connected AHU Capacity Min - Max	kW	3 - 7	7 - 14	7 - 14	14 - 28	14 - 28	14 - 28
Airflow m3/Hr Standard - (Min/Max)	m3/h	1300 - 780/1950	1800 - 1080/2700	2500 - 1500/3750	3000 - 1800/4500	4500 - 2700/6750	5500 - 3300/8250
Internal Volume Standard - (Min/Max)	L	1.8 - 1.08/2.16	2.7 - 1.62/3.24	3.6 - 2.16/4.32	4.05 - 2.44/4.85	6.57 - 3.94/7.88	7.33 - 4.4/8.8
Suggested Power supply	V-ph-Hz-A	220/240-1-50 - 6	220/240-1-50 - 6	220/240-1-50 - 6	220/240-1-50 - 6	220/240-1-50 - 6	220/240-1-50 - 6



Turn to the experts



VRF DX Kits - DDC Type - Return Air +10H +14C (Continued)

AHU Kit		40VA020D7FAQEE	40VA020D7FAQEE	40VA020D7FAQEE	40VA020D7FAQEE	40VA020D7FAQEE	40VA026D7FAQEE
Retail Price		£862	£862	£862	£862	£862	£883
Outdoor Capacity	HP	12	14	16	18	20	22
Valve Boxes	No.	1	1	1	1	1	1
Connected AHU Capacity Min - Max	kW	17 - 35	28 - 42	28 - 56	28 - 56	28 - 56	56 - 73
Airflow m3/Hr Standard - (Min/Max)	m3/h	6500 - 3900/9750	8000 - 4800/12000	9000 - 5400/13500	10000 - 6000/15000	11000 - 6600/16500	12000 - 7200/18000
Internal Volume Standard - (Min/Max)	L	8.09 - 4.85/9.71	9.57 - 5.74/11.48	11.05 - 6.63/13.26	12.25 - 7.35/14.69	13.44 - 8.06/16.13	14.6 - 8.76/17.52
Suggested Power supply	V-ph-Hz-A	220/240-1-50 - 6	220/240-1-50 - 6	220/240-1-50 - 6	220/240-1-50 - 6	220/240-1-50 - 6	220/240-1-50 - 6



Turn to the experts



VRF DX Kits - DDC Type - Return Air +10H +14C (Continued)

AHU Kit		40VA026D7FAQEE	40VA026D7FAQEE	40VA020D7FAQEE	40VA020D7FAQEE	40VA020D7FAQEE	40VA020D7FAQEE
Valve Box 2		-	-	40VA020D7FAQEE	40VA020D7FAQEE	40VA020D7FAQEE	40VA020D7FAQEE
Retail Price		£883	£883	£1,724	£1,724	£1,724	£1,724
Outdoor Capacity	HP	24	26	28	30	32	34
Valve Boxes	No.	1	1	2	2	2	2
Connected AHU Capacity Min - Max	kW	56 - 73	56 - 73	73 - 112	73 - 112	73 - 112	73 - 112
Airflow m3/Hr Standard - (Min/Max)	m3/h	13000 - 7800/19500	14000 - 8400/21000	16000 - 9600/24000	17000 - 10200/25500	18000 - 10800/27000	19000 - 11400/28500
Internal Volume Standard - (Min/Max)	L	15.76 - 9.46/18.91	16.8 - 10.08/20.16	19.14 - 11.48/22.97	20.62 - 12.37/24.74	22.1 - 13.26/26.52	23.3 - 13.98/27.95
Suggested Power supply	V-ph-Hz-A	220/240-1-50 - 6	220/240-1-50 - 6	220/240-1-50 - 6+6	220/240-1-50 - 6+6	220/240-1-50 - 6+6	220/240-1-50 - 6+6



Turn to the experts



VRF DX Kits - DDC Type - Return Air +10H +14C (Continued)

AHU Kit		40VA020D7FAQEE	40VA020D7FAQEE	40VA020D7FAQEE	40VA026D7FAQEE	40VA026D7FAQEE	40VA026D7FAQEE
Valve Box 2		40VA020D7FAQEE	40VA020D7FAQEE	40VA020D7FAQEE	40VA026D7FAQEE	40VA026D7FAQEE	40VA026D7FAQEE
Retail Price		£1,724	£1,724	£1,724	£1,766	£1,766	£1,766
Outdoor Capacity	HP	36	38	40	42	44	46
Valve Boxes	No.	2	2	2	2	2	2
Connected AHU Capacity Min - Max	kW	73 - 112	73 - 112	73 - 112	112 - 146	112 - 146	112 - 146
Airflow m3/Hr Standard - (Min/Max)	m3/h	20000 - 12000/30000	21000 - 12600/31500	22000 - 13200/33000	23000 - 13800/34500	24000 - 14400/36000	25000 - 15000/37500
Internal Volume Standard - (Min/Max)	L	24.5 - 14.7/29.38	25.69 - 15.41/30.82	26.88 - 16.12/32.26	28.04 - 16.82/33.65	29.2 - 16.52/35.04	30.36 - 18.22/36.43
Suggested Power supply	V-ph-Hz-A	220/240-1-50 - 6+6	220/240-1-50 - 6+6	220/240-1-50 - 6+6	220/240-1-50 - 6+6	220/240-1-50 - 6+6	220/240-1-50 - 6+6



Turn to the experts



VRF DX Kits - DDC Type - Return Air +10H +14C (Continued)

AHU Kit		40VA026D7FAQEE	40VA026D7FAQEE	40VA020D7FAQEE	40VA020D7FAQEE	40VA020D7FAQEE	40VA020D7FAQEE
Valve Box 2		40VA026D7FAQEE	40VA026D7FAQEE	40VA020D7FAQEE	40VA020D7FAQEE	40VA020D7FAQEE	40VA020D7FAQEE
Valve Box 3		-	-	40VA020D7FAQEE	40VA020D7FAQEE	40VA020D7FAQEE	40VA020D7FAQEE
Retail Price		£1,766	£1,766	£2,586	£2,586	£2,586	£2,586
Outdoor Capacity	HP	48	50	52	54	56	58
Valve Boxes	No.	2	2	3	3	3	3
Connected AHU Capacity Min - Max	kW	112 - 146	112 - 146	112 - 146	146 - 168	146 - 168	146 - 168
Airflow m3/Hr Standard - (Min/Max)	m3/h	26000 - 15600/39000	27000 - 16200/40500	28000 - 16800/42000	30000 - 18000/45000	31000 - 18600/46500	32000 - 19200/48000
Internal Volume Standard - (Min/Max)	L	31.52 - 18.92/37.82	32.56 - 19.54/39.07	33.6 - 20.16/40.32	36.75 - 22.05/44.07	37.94 - 22.76/45.51	39.13 - 23.47/46.95
Suggested Power supply	V-ph-Hz-A	220/240-1-50 - 6+6	220/240-1-50 - 6+6	220/240-1-50 - 6+6+6	220/240-1-50 - 6+6+6	220/240-1-50 - 6+6+6	220/240-1-50 - 6+6+6



Turn to the experts



VRF DX Kits - DDC Type - Return Air +10H +14C (Continued)

AHU Kit		40VA020D7FAQEE	40VA026D7FAQEE	40VA026D7FAQEE	40VA026D7FAQEE	40VA026D7FAQEE	40VA026D7FAQEE
Valve Box 2		40VA020D7FAQEE	40VA026D7FAQEE	40VA026D7FAQEE	40VA026D7FAQEE	40VA026D7FAQEE	40VA026D7FAQEE
Valve Box 3		40VA020D7FAQEE	40VA026D7FAQEE	40VA026D7FAQEE	40VA026D7FAQEE	40VA026D7FAQEE	40VA026D7FAQEE
Valve Box 4		-	40VA026D7FAQEE	40VA026D7FAQEE	40VA026D7FAQEE	40VA026D7FAQEE	40VA026D7FAQEE
Retail Price		£2,586	£3,532	£3,532	£3,532	£3,532	£3,532
Outdoor Capacity	HP	60	62	64	66	68	70
Valve Boxes	No.	3	4	4	4	4	4
Connected AHU Capacity Min - Max	kW	146 - 168	168 - 219	168 - 219	168 - 219	168 - 219	168 - 219
Airflow m3/Hr Standard - (Min/Max)	m3/h	33000 - 19800/49500	34000 - 20400/51000	35000 - 21000/52500	36000 - 21600/54000	37000 - 22200/55500	38000 - 22800/57000
Internal Volume Standard - (Min/Max)	L	40.32 - 24.18/48.38	41.48 - 24.88/49.78	42.64 - 25.58/51.17	43.8 - 26.28/52.56	44.96 - 26.98/53.95	46.12 - 27.68/55.34
Suggested Power supply	V-ph-Hz-A	220/240-1-50 - 6+6+6	220/240-1-50 - 6+6+6+6	220/240-1-50 - 6+6+6+6	220/240-1-50 - 6+6+6+6	220/240-1-50 - 6+6+6+6	220/240-1-50 - 6+6+6+6





Turn to the experts



VRF DX Kits - DDC Type - Return Air +10H +14C (Continued)

AHU Kit		40VA026D7FAQEE	40VA026D7FAQEE	40VA026D7FAQEE	40VA026D7FAQEE	40VA020D7FAQEE	40VA026D7FAQEE
Valve Box 2		40VA026D7FAQEE	40VA026D7FAQEE	40VA026D7FAQEE	40VA026D7FAQEE	40VA020D7FAQEE	40VA026D7FAQEE
Valve Box 3		40VA026D7FAQEE	40VA026D7FAQEE	40VA026D7FAQEE	40VA026D7FAQEE	40VA020D7FAQEE	40VA026D7FAQEE
Valve Box 4		40VA026D7FAQEE	40VA026D7FAQEE	40VA026D7FAQEE	40VA026D7FAQEE	40VA020D7FAQEE	40VA026D7FAQEE
Retail Price		£3,532	£3,532	£3,532	£3,532	£3,448	£3,532
Outdoor Capacity	HP	72	74	76	78	80	82
Valve Boxes	No.	4	4	4	4	4	4
Connected AHU Capacity Min - Max	kW	168 - 219	168 - 219	168 - 219	168 - 219	219 - 224	224 - 292
Airflow m3/Hr Standard - (Min/Max)	m3/h	39000 - 23400/58500	40000 - 24000/6000	41000 - 24600/61500	42000 - 25200/63000	44000 - 26400/66000	45000 - 27000/67500
Internal Volume Standard - (Min/Max)	L	47.28 - 28.38/56.73	48.32 - 29/57.98	49.36 - 29.62/59.23	50.4 - 32.4/60.48	53.76 - 32.6/64.52	54.92 - 32.94/65.91
Suggested Power supply	V-ph-Hz-A	220/240-1-50 - 6+6+6+6	220/240-1-50 - 6+6+6+6	220/240-1-50 - 6+6+6+6	220/240-1-50 - 6+6+6+6	220/240-1-50 - 6+6+6+6	220/240-1-50 - 6+6+6+6



Turn to the experts



VRF DX Kits - DDC Type - Return Air +10H +14C (Continued)

AHU Kit		40VA026D7FAQEE	40VA026D7FAQEE	40VA026D7FAQEE	40VA026D7FAQEE	40VA026D7FAQEE	40VA026D7FAQEE
Valve Box 2		40VA026D7FAQEE	40VA026D7FAQEE	40VA026D7FAQEE	40VA026D7FAQEE	40VA026D7FAQEE	40VA026D7FAQEE
Valve Box 3		40VA026D7FAQEE	40VA026D7FAQEE	40VA026D7FAQEE	40VA026D7FAQEE	40VA026D7FAQEE	40VA026D7FAQEE
Valve Box 4		40VA026D7FAQEE	40VA026D7FAQEE	40VA026D7FAQEE	40VA026D7FAQEE	40VA026D7FAQEE	40VA026D7FAQEE
Retail Price		£3,532	£3,532	£3,532	£3,532	£3,532	£3,532
Outdoor Capacity	HP	84	86	88	90	92	94
Valve Boxes	No.	4	4	4	4	4	4
Connected AHU Capacity Min - Max	kW	224 - 292	224 - 292	224 - 292	224 - 292	224 - 292	224 - 292
Airflow m3/Hr Standard - (Min/Max)	m3/h	46000 - 27600/69000	47000 - 28200/70500	48000 - 28800/72000	49000 - 29400/73500	50000 - 30000/75000	51000 - 30600/76500
Internal Volume Standard - (Min/Max)	L	56.08 - 33.64/67.3	57.24 - 34.34/68.69	58.4 - 35.04/70.08	59.56 - 35.74/71.47	60.72 - 36.44/72.86	61.88 - 37.14/74.25
Suggested Power supply	V-ph-Hz-A	220/240-1-50 - 6+6+6+6	220/240-1-50 - 6+6+6+6	220/240-1-50 - 6+6+6+6	220/240-1-50 - 6+6+6+6	220/240-1-50 - 6+6+6+6	220/240-1-50 - 6+6+6+6



Turn to the experts



VRF DX Kits - DDC Type - Return Air +10H +14C (Continued)

AHU Kit		40VA026D7FAQEE	40VA026D7FAQEE	40VA026D7FAQEE	40VA026D7FAQEE	40VA026D7FAQEE
Valve Box 2		40VA026D7FAQEE	40VA026D7FAQEE	40VA026D7FAQEE	40VA026D7FAQEE	40VA026D7FAQEE
Valve Box 3		40VA026D7FAQEE	40VA026D7FAQEE	40VA026D7FAQEE	40VA026D7FAQEE	40VA026D7FAQEE
Valve Box 4		40VA026D7FAQEE	40VA026D7FAQEE	40VA026D7FAQEE	40VA026D7FAQEE	40VA026D7FAQEE
Retail Price		£3,532	£3,532	£3,532	£3,532	£3,532
Outdoor Capacity	HP	96	98	100	102	104
Valve Boxes	No.	4	4	4	4	4
Connected AHU Capacity Min - Max	kW	224 - 292	224 - 292	224 - 292	224 - 292	224 - 292
Airflow m3/Hr Standard - (Min/Max)	m3/h	52000 - 31200/78000	53000 - 31800/79500	54000 - 32400/81000	55000 - 33000/82500	56000 - 33600/84000
Internal Volume Standard - (Min/Max)	L	63.04 - 37.84/75.64	64.08 - 38.46/76.89	65.12 - 38.8/78.14	66.16 - 39.7/79.39	67.2 - 40.32/80.64
Suggested Power supply	V-ph-Hz-A	220/240-1-50 - 6+6+6+6	220/240-1-50 - 6+6+6+6	220/240-1-50 - 6+6+6+6	220/240-1-50 - 6+6+6+6	220/240-1-50 - 6+6+6+6



Turn to the experts



VRF DX Kits - DDC Type - Fresh Air +5H +35C

AHU Kit		40VA003D7FAQEE	40VA005D7FAQEE	40VA005D7FAQEE	40VA010D7FAQEE	40VA010D7FAQEE	40VA010D7FAQEE
Retail Price		£694	£684	£684	£735	£735	£735
Outdoor Capacity	HP	3	4	5	6	8	10
Valve Boxes	No.	1	1	1	1	1	1
Connected AHU Capacity Min - Max	kW	3 - 7	7 - 14	7 - 14	14 - 28	14 - 28	14 - 28
Airflow m3/Hr Standard - (Min/Max)	m3/h	650 - 520/845	900 - 720/1170	1250 - 1000/1625	1500 - 1200/1950	2250 - 1800/2925	2750 - 2200/3575
Internal Volume Standard - (Min/Max)	L	1.26 - 1.01/1.51	1.89 - 1.51/2.27	2.52 - 2.02/3.02	3.56 - 2.85/4.27	4.6 - 3.68/5.52	5.13 - 4.11/6.16
Suggested Power supply	V-ph-Hz-A	220/240-1-50 - 6	220/240-1-50 - 6	220/240-1-50 - 6	220/240-1-50 - 6	220/240-1-50 - 6	220/240-1-50 - 6



Turn to the experts



VRF DX Kits - DDC Type - Fresh Air +5H +35C (Continued)

AHU Kit		40VA020D7FAQEE	40VA020D7FAQEE	40VA020D7FAQEE	40VA020D7FAQEE	40VA020D7FAQEE	40VA026D7FAQEE
Retail Price		£862	£862	£862	£862	£862	£883
Outdoor Capacity	HP	12	14	16	18	20	22
Valve Boxes	No.	1	1	1	1	1	1
Connected AHU Capacity Min - Max	kW	17 - 35	28 - 42	28 - 56	28 - 56	28 - 56	56 - 73
Airflow m3/Hr Standard - (Min/Max)	m3/h	3250 - 2600/4225	4000 - 3200/5200	4500 - 3600/5850	5000 - 4000/6500	5500 - 4400/7150	6000 - 4800/7800
Internal Volume Standard - (Min/Max)	L	5.66 - 4.53/6.8	6.7 - 5.36/8.04	7.74 - 6.19/9.28	8.57 - 6.86/10.29	9.41 - 7.53/11.29	10.22 - 8.18/12.26
Suggested Power supply	V-ph-Hz-A	220/240-1-50 - 6	220/240-1-50 - 6	220/240-1-50 - 6	220/240-1-50 - 6	220/240-1-50 - 6	220/240-1-50 - 6



Turn to the experts



VRF DX Kits - DDC Type - Fresh Air +5H +35C (Continued)

AHU Kit		40VA026D7FAQEE	40VA026D7FAQEE	40VA020D7FAQEE	40VA020D7FAQEE	40VA020D7FAQEE	40VA020D7FAQEE
Valve Box 2		-	-	40VA020D7FAQEE	40VA020D7FAQEE	40VA020D7FAQEE	40VA020D7FAQEE
Retail Price		£883	£883	£1,724	£1,724	£1,724	£1,724
Outdoor Capacity	HP	24	26	28	30	32	34
Valve Boxes	No.	1	1	2	2	2	2
Connected AHU Capacity Min - Max	kW	56 - 73	56 - 73	73 - 112	73 - 112	73 - 112	73 - 112
Airflow m3/Hr Standard - (Min/Max)	m3/h	6500 - 5200/8450	7000 - 5600/9100	8000 - 6400/10400	8500 - 6800/11050	9000 - 7200/11700	9500 - 7600/12350
Internal Volume Standard - (Min/Max)	L	11.03 - 8.83/13.24	11.76 - 9.41/14.11	13.4 - 10.72/16.08	14.43 - 11.55/17.32	15.48 - 12.38/18.56	16.31 - 13.05/19.57
Suggested Power supply	V-ph-Hz-A	220/240-1-50 - 6	220/240-1-50 - 6	220/240-1-50 - 6+6	220/240-1-50 - 6+6	220/240-1-50 - 6+6	220/240-1-50 - 6+6



Turn to the experts



VRF DX Kits - DDC Type - Fresh Air +5H +35C (Continued)

AHU Kit		40VA020D7FAQEE	40VA020D7FAQEE	40VA020D7FAQEE	40VA026D7FAQEE	40VA026D7FAQEE	40VA026D7FAQEE
Valve Box 2		£1,724	£1,724	£1,724	£1,766	£1,766	£1,766
Retail Price		£1,690	£1,690	£1,690	£1,730	£1,730	£1,730
Outdoor Capacity	HP	36	38	40	42	44	46
Valve Boxes	No.	2	2	2	2	2	2
Connected AHU Capacity Min - Max	kW	73 - 112	73 - 112	73 - 112	112 - 146	112 - 146	112 - 146
Airflow m3/Hr Standard - (Min/Max)	m3/h	10000 - 8000/13000	10500 - 8400/13650	11000 - 8800/14300	11500 - 9200/14950	12000 - 9600/15600	12500 - 10000/16250
Internal Volume Standard - (Min/Max)	L	17.14 - 13.72/20.58	17.97 - 14.39/21.59	18.8 - 15.06/22.6	19.63 - 15.73/23.61	20.46 - 16.4/24.62	21.29 - 17.07/25.63
Suggested Power supply	V-ph-Hz-A	220/240-1-50 - 6+6	220/240-1-50 - 6+6	220/240-1-50 - 6+6	220/240-1-50 - 6+6	220/240-1-50 - 6+6	220/240-1-50 - 6+6



Turn to the experts



VRF DX Kits - DDC Type - Fresh Air +5H +35C (Continued)

AHU Kit		40VA026D7FAQEE	40VA026D7FAQEE	40VA020D7FAQEE	40VA020D7FAQEE	40VA020D7FAQEE	40VA020D7FAQEE
Valve Box 2		40VA026D7FAQEE	40VA026D7FAQEE	40VA020D7FAQEE	40VA020D7FAQEE	40VA020D7FAQEE	40VA020D7FAQEE
Valve Box 3		-	-	40VA020D7FAQEE	40VA020D7FAQEE	40VA020D7FAQEE	40VA020D7FAQEE
Retail Price		£1,766	£1,766	£2,586	£2,586	£2,586	£2,586
Outdoor Capacity	HP	48	50	52	54	56	58
Valve Boxes	No.	2	2	3	3	3	3
Connected AHU Capacity Min - Max	kW	112 - 146	112 - 146	112 - 146	146 - 168	146 - 168	146 - 168
Airflow m3/Hr Standard - (Min/Max)	m3/h	13000 - 10400/16900	13500 - 10800/17550	14000 - 11200/18200	14500 - 11600/18850	15000 - 12000/19500	15500 - 12400/20150
Internal Volume Standard - (Min/Max)	L	22.12 - 17.74/26.64	22.95 - 18.41/27.65	23.78 - 19.08/28.66	24.61 - 19.75/29.67	25.44 - 20.42/30.68	26.27 - 21.09/31.69
Suggested Power supply	V-ph-Hz-A	220/240-1-50 - 6+6	220/240-1-50 - 6+6	220/240-1-50 - 6+6+6	220/240-1-50 - 6+6+6	220/240-1-50 - 6+6+6	220/240-1-50 - 6+6+6





Turn to the experts



VRF DX Kits - DDC Type - Fresh Air +5H +35C (Continued)

AHU Kit		40VA020D7FAQEE	40VA026D7FAQEE	40VA026D7FAQEE	40VA026D7FAQEE	40VA026D7FAQEE	40VA026D7FAQEE
Valve Box 2		40VA020D7FAQEE	40VA026D7FAQEE	40VA026D7FAQEE	40VA026D7FAQEE	40VA026D7FAQEE	40VA026D7FAQEE
Valve Box 3		40VA020D7FAQEE	40VA026D7FAQEE	40VA026D7FAQEE	40VA026D7FAQEE	40VA026D7FAQEE	40VA026D7FAQEE
Valve Box 4		-	40VA026D7FAQEE	40VA026D7FAQEE	40VA026D7FAQEE	40VA026D7FAQEE	40VA026D7FAQEE
Retail Price		£2,586	£3,532	£3,532	£3,532	£3,532	£3,532
Outdoor Capacity	HP	60	62	64	66	68	70
Valve Boxes	No.	3	4	4	4	4	4
Connected AHU Capacity Min - Max	kW	146 - 168	168 - 219	168 - 219	168 - 219	168 - 219	168 - 219
Airflow m3/Hr Standard - (Min/Max)	m3/h	16000 - 12800/20800	16500 - 13200/21450	17000 - 13600/22100	17500 - 14000/22750	18000 - 14400/23400	18500 - 14800/24050
Internal Volume Standard - (Min/Max)	L	27.1 - 21.76/32.7	27.93 - 22.43/33.71	28.76 - 23.1/34.72	29.59 - 23.77/35.73	30.42 - 24.44/36.74	31.25 - 25.11/37.75
Suggested Power supply	V-ph-Hz-A	220/240-1-50 - 6+6+6	220/240-1-50 - 6+6+6+6	220/240-1-50 - 6+6+6+6	220/240-1-50 - 6+6+6+6	220/240-1-50 - 6+6+6+6	220/240-1-50 - 6+6+6+6



Turn to the experts



VRF DX Kits - DDC Type - Fresh Air +5H +35C (Continued)

AHU Kit		40VA026D7FAQEE	40VA026D7FAQEE	40VA026D7FAQEE	40VA026D7FAQEE	40VA020D7FAQEE	40VA026D7FAQEE
Valve Box 2		40VA026D7FAQEE	40VA026D7FAQEE	40VA026D7FAQEE	40VA026D7FAQEE	40VA020D7FAQEE	40VA026D7FAQEE
Valve Box 3		40VA026D7FAQEE	40VA026D7FAQEE	40VA026D7FAQEE	40VA026D7FAQEE	40VA020D7FAQEE	40VA026D7FAQEE
Valve Box 4		40VA026D7FAQEE	40VA026D7FAQEE	40VA026D7FAQEE	40VA026D7FAQEE	40VA020D7FAQEE	40VA026D7FAQEE
Retail Price		£3,532	£3,532	£3,532	£3,532	£3,448	£3,532
Outdoor Capacity	HP	72	74	76	78	80	82
Valve Boxes	No.	4	4	4	4	4	4
Connected AHU Capacity Min - Max	kW	168 - 219	168 - 219	168 - 219	168 - 219	219 - 224	224 - 292
Airflow m3/Hr Standard - (Min/Max)	m3/h	19000 - 15200/24700	19500 - 15600/25350	20000 - 16000/26000	20500 - 16400/26650	21000 - 16800/27300	21500 - 17200/27950
Internal Volume Standard - (Min/Max)	L	32.08 - 25.78/38.76	32.91 - 26.45/39.77	33.74 - 27.12/40.78	34.57 - 27.79/41.79	35.4 - 28.46/42.8	36.23 - 29.13/43.81
Suggested Power supply	V-ph-Hz-A	220/240-1-50 - 6+6+6+6	220/240-1-50 - 6+6+6+6	220/240-1-50 - 6+6+6+6	220/240-1-50 - 6+6+6+6	220/240-1-50 - 6+6+6+6	220/240-1-50 - 6+6+6+6



Turn to the experts



VRF DX Kits - DDC Type - Fresh Air +5H +35C (Continued)

AHU Kit		40VA026D7FAQEE	40VA026D7FAQEE	40VA026D7FAQEE	40VA026D7FAQEE	40VA026D7FAQEE	40VA026D7FAQEE
Valve Box 2		40VA026D7FAQEE	40VA026D7FAQEE	40VA026D7FAQEE	40VA026D7FAQEE	40VA026D7FAQEE	40VA026D7FAQEE
Valve Box 3		40VA026D7FAQEE	40VA026D7FAQEE	40VA026D7FAQEE	40VA026D7FAQEE	40VA026D7FAQEE	40VA026D7FAQEE
Valve Box 4		40VA026D7FAQEE	40VA026D7FAQEE	40VA026D7FAQEE	40VA026D7FAQEE	40VA026D7FAQEE	40VA026D7FAQEE
Retail Price		£3,532	£3,532	£3,532	£3,532	£3,532	£3,532
Outdoor Capacity	HP	84	86	88	90	92	94
Valve Boxes	No.	4	4	4	4	4	4
Connected AHU Capacity Min - Max	kW	224 - 292	224 - 292	224 - 292	224 - 292	224 - 292	224 - 292
Airflow m3/Hr Standard - (Min/Max)	m3/h	22000 - 17600/28600	22500 - 18000/29250	23000 - 18400/29900	23500 - 18800/30550	24000 - 19200/31200	24500 - 19600/31850
Internal Volume Standard - (Min/Max)	L	37.06 - 29.8/44.82	37.89 - 30.47/45.83	38.72 - 31.14/46.84	39.55 - 31.81/47.85	40.38 - 32.48/48.86	41.21 - 33.15/49.87
Suggested Power supply	V-ph-Hz-A	220/240-1-50 - 6+6+6+6	220/240-1-50 - 6+6+6+6	220/240-1-50 - 6+6+6+6	220/240-1-50 - 6+6+6+6	220/240-1-50 - 6+6+6+6	220/240-1-50 - 6+6+6+6



Turn to the experts



VRF DX Kits - DDC Type - Fresh Air +5H +35C (Continued)

AHU Kit		40VA026D7FAQEE	40VA026D7FAQEE	40VA026D7FAQEE	40VA026D7FAQEE	40VA026D7FAQEE
Valve Box 2		40VA026D7FAQEE	40VA026D7FAQEE	40VA026D7FAQEE	40VA026D7FAQEE	40VA026D7FAQEE
Valve Box 3		40VA026D7FAQEE	40VA026D7FAQEE	40VA026D7FAQEE	40VA026D7FAQEE	40VA026D7FAQEE
Valve Box 4		40VA026D7FAQEE	40VA026D7FAQEE	40VA026D7FAQEE	40VA026D7FAQEE	40VA026D7FAQEE
Retail Price		£3,532	£3,532	£3,532	£3,532	£3,532
Outdoor Capacity	HP	96	98	100	102	104
Valve Boxes	No.	4	4	4	4	4
Connected AHU Capacity Min - Max	kW	224 - 292	224 - 292	224 - 292	224 - 292	224 - 292
Airflow m3/Hr Standard - (Min/Max)	m3/h	25000 - 20000/32500	25500 - 20400/33150	26000 - 20800/33800	26500 - 21200/34450	27000 - 21600/35100
Internal Volume Standard - (Min/Max)	L	42.04 - 33.82/50.88	42.87 - 34.49/51.89	43.7 - 35.16/52.9	44.53 - 35.83/53.91	45.36 - 36.5/54.92
Suggested Power supply	V-ph-Hz-A	220/240-1-50 - 6+6+6+6	220/240-1-50 - 6+6+6+6	220/240-1-50 - 6+6+6+6	220/240-1-50 - 6+6+6+6	220/240-1-50 - 6+6+6+6



Turn to the experts



VRF Indoor Units - High Wall

Indoor Unit		40VK005S-7S2-QEE	40VK007S-7S2-QEE	40VK009S-7S2-QEE	40VK012S-7S2-QEE	40VK016S-7S2-QEE
Indoor Unit Retail Price*		£663	£674	£689	£699	£755
Rated Cooling capacity	kW	1.5	2.2	2.8	3.6	4.5
Rated Heating capacity	kW	1.7	2.5	3.2	4.0	5.0
Sound pressure level (H/M/L)	dB(A)	33/31/29	35/31/29	36/31/29	37/33/29	39/36/34
Dimensions (HxWxD)	mm	280x855x208	280x855x208	280x855x208	280x855x208	336x1115x243
Weight	kg	10	10	10	10	16
Suggested Power supply	V-ph-Hz-A	220/240-1-50 - 6	220/240-1-50 - 6	220/240-1-50 - 6	220/240-1-50 - 6	220/240-1-50 - 6
Pipe Connections (Gas - Liquid)	inch	3/8 - 1/4	3/8 - 1/4	3/8 - 1/4	1/2 - 1/4	1/2 - 1/4

* 40VC167FQEE Wireless remote included as standard



Turn to the experts



VRF Indoor Units - High Wall (Continued)

Indoor Unit		40VK018S-7S2-QEE	40VK024S-7S2-QEE	40VK028S-7S2-QEE	40VK030S-7S2-QEE
Indoor Unit Retail Price*		£776	£847	£1,000	£1,051
Rated Cooling capacity	kW	5.6	7.1	8.0	9.0
Rated Heating capacity	kW	6.3	8.0	9.0	10.0
Sound pressure level (H/M/L)	dB(A)	40/39/35	44/40/36	48/43/40	49/44/41
Dimensions (HxWxD)	mm	336x1115x243	336x1115x243	365x1316x270	365x1316x270
Weight	kg	16	16	22	22
Suggested Power supply	V-ph-Hz-A	220/240-1-50 - 6	220/240-1-50 - 6	220/240-1-50 - 6	220/240-1-50 - 6
Pipe Connections (Gas - Liquid)	inch	1/2 - 1/4	5/8 - 3/8	5/8 - 3/8	5/8 - 3/8

* 40VC167FQEE Wireless remote included as standard



Turn to the experts



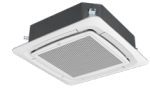
VRF Indoor Units - Compact Cassette

Indoor Unit		40VU005C-7S-QEE	40VU007C-7S-QEE	40VU009C-7S-QEE	40VU012C-7S-QEE	40VU016C-7S-QEE	40VU018C-7S-QEE
Facia Panel		40VPU018C7SQEE	40VPU018C7SQEE	40VPU018C7SQEE	40VPU018C7SQEE	40VPU018C7SQEE	40VPU018C7SQEE
Indoor Unit Retail Price (Inc. Facia Panel)		£847	£867	£939	£980	£1,031	£1,102

Rated Cooling capacity	kW	1.5	2.2	2.8	3.6	4.5	5.6
Rated Heating capacity	kW	1.7	2.5	3.2	4.0	5.0	6.3
Sound pressure level(H/M/L)	dB(A)	32/30/29	32/30/29	32/30/29	33/30/29	33/30/29	34/32/30
Dimensions (HxWxD) indoor	mm	260x570x570	260x570x570	260x570x570	260x570x570	260x570x570	260x570x570
Dimensions (HxWxD) panel	mm	60x620x620	60x620x620	60x620x620	60x620x620	60x620x620	60x620x620
Weight indoor/panel	kg	16/3	16/3	16/3	19/3	19/3	19/3
Suggested Power supply	V-ph-Hz-A	220/240-1-50 - 6	220/240-1-50 - 6	220/240-1-50 - 6	220/240-1-50 - 6	220/240-1-50 - 6	220/240-1-50 - 6
Pipe Connections (Gas - Liquid)	inch	3/8 - 1/4	3/8 - 1/4	3/8 - 1/4	1/2 - 1/4	1/2 - 1/4	1/2 - 1/4



Turn to the experts



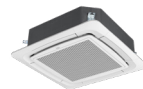
VRF Indoor Units - Round Way Cassette

Indoor Unit		40VU007R-7E-QEE	40VU009R-7E-QEE	40VU012R-7E-QEE	40VU016R-7E-QEE	40VU018R-7E-QEE	40VU024R-7E-QEE
Facia Panel		40VPU054R7EQEE	40VPU054R7EQEE	40VPU054R7EQEE	40VPU054R7EQEE	40VPU054R7EQEE	40VPU054R7EQEE
Indoor Unit Retail Price (Inc. Facia Panel)		£908	£929	£954	£1,010	£1,036	£1,082

Rated Cooling capacity	kW	2.2	2.8	3.6	4.5	5.6	7.1
Rated Heating capacity	kW	2.5	3.2	4.0	5.0	6.3	8.0
Sound pressure level(H/M/L)	dB(A)	30/27/25	30/27/25	30/27/25	32/29/27	33/30/29	35/34/31
Dimensions (HxWxD) indoor	mm	183x840x840	183x840x840	183x840x840	183x840x840	183x840x840	204x840x840
Dimensions (HxWxD) panel	mm	50x950x950	50x950x950	50x950x950	50x950x950	50x950x950	50x950x950
Weight indoor/panel	kg	25/7	25/7	25/7	25/7	25/7	27/7
Suggested Power supply	V-ph-Hz-A	220/240-1-50 - 6	220/240-1-50 - 6	220/240-1-50 - 6	220/240-1-50 - 6	220/240-1-50 - 6	220/240-1-50 - 6
Pipe Connections (Gas - Liquid)	inch	3/8 - 1/4	3/8 - 1/4	1/2 - 1/4	1/2 - 1/4	1/2 - 1/4	5/8 - 3/8



Turn to the experts



VRF Indoor Units - Round Way Cassette (Continued)

Indoor Unit		40VU028R-7E-QEE	40VU030R-7E-QEE	40VU038R-7E-QEE	40VU048R-7E-QEE	40VU054R-7E-QEE
Facia Panel		40VPU054R7EQEE	40VPU054R7EQEE	40VPU054R7EQEE	40VPU054R7EQEE	40VPU054R7EQEE
Indoor Unit Retail Price (Inc. Facia Panel)		£1,163	£1,275	£1,275	£1,326	£1,500

Rated Cooling capacity	kW	8.0	9.0	11.2	14.0	16.0
Rated Heating capacity	kW	9.0	10.0	12.5	16.0	18.0
Sound pressure level(H/M/L)	dB(A)	37/35/31	37/35/31	37/35/31	44/40/36	44/40/36
Dimensions (HxWxD) indoor	mm	204x840x840	246x840x840	246x840x840	288x840x840	288x840x840
Dimensions (HxWxD) panel	mm	50x950x950	50x950x950	50x950x950	50x950x950	50x950x950
Weight indoor/panel	kg	27/7	31/7	31/7	33/7	33/7
Suggested Power supply	V-ph-Hz-A	220/240-1-50 - 6	220/240-1-50 - 10	220/240-1-50 - 10	220/240-1-50 - 10	220/240-1-50 - 10
Pipe Connections (Gas - Liquid)	inch	5/8 - 3/8	5/8 - 3/8	5/8 - 3/8	5/8 - 3/8	5/8 - 3/8



Turn to the experts



VRF Indoor Units - 2-Way Cassette

Indoor Unit	40VU0072-7G-QEE	40VU0092-7G-QEE	40VU0122-7G-QEE	40VU0162-7G-QEE	40VU0182-7G-QEE
Facia Panel	40VPU01827GQEE	40VPU01827GQEE	40VPU01827GQEE	40VPU01827GQEE	40VPU01827GQEE
Indoor Unit Retail Price (Inc. Facia Panel)	£1,306	£1,377	£1,428	£1,525	£1,622

Rated Cooling capacity	kW	2.2	2.8	3.6	4.5	5.6
Rated Heating capacity	kW	2.5	3.2	4.0	5.0	6.3
Sound pressure level(H/M/L)	dB(A)	42/37/33	42/37/33	42/37/33	44/39/34	44/39/34
Dimensions (HxWxD) indoor	mm	220x817x620	220x817x620	220x817x620	220x817x620	220x817x620
Dimensions (HxWxD) panel	mm	68x1055x680	68x1055x680	68x1055x680	68x1055x680	68x1055x680
Weight indoor/panel	kg	21/7	21/7	21/7	21/7	21/7
Suggested Power supply	V-ph-Hz-A	220/240-1-50 - 6	220/240-1-50 - 6	220/240-1-50 - 6	220/240-1-50 - 6	220/240-1-50 - 6
Pipe Connections (Gas - Liquid)	inch	3/8 - 1/4	3/8 - 1/4	1/2 - 1/4	1/2 - 1/4	1/2 - 1/4



Turn to the experts



VRF Indoor Units - 1-Way Cassette

Indoor Unit		40VU0051-7E-QEE	40VU0071-7E-QEE	40VU0091-7E-QEE	40VU0121-7E-QEE
Facia Panel		40VPU01217EQEE	40VPU01217EQEE	40VPU01217EQEE	40VPU01217EQEE
Indoor Unit Retail Price (Inc. Facia Panel)		£1,133	£1,173	£1,214	£1,245

Rated Cooling capacity	kW	1.5	2.2	2.8	3.6
Rated Heating capacity	kW	1.7	2.5	3.2	4.0
Sound pressure level(H/M/L)	dB(A)	32/29/24	32/29/24	32/29/24	34/30/25
Dimensions (HxWxD) indoor	mm	185x875x505	185x875x505	185x875x505	185x875x505
Dimensions (HxWxD) panel	mm	122x1050x560	122x1050x560	122x1050x560	122x1050x560
Weight indoor/panel	kg	15/3	15/3	15/3	15/3
Suggested Power supply	V-ph-Hz-A	220/240-1-50 - 6	220/240-1-50 - 6	220/240-1-50 - 6	220/240-1-50 - 6
Pipe Connections (Gas - Liquid)	inch	3/8 - 1/4	3/8 - 1/4	3/8 - 1/4	1/2 - 1/4



Turn to the experts



VRF Indoor Units - Slim Ducted

Indoor Unit		40VD005L-7E-QEE	40VD007L-7E-QEE	40VD009L-7E-QEE	40VD012L-7E-QEE	40VD016L-7E-QEE	40VD018L-7E-QEE	40VD024L-7E-QEE
Indoor Unit Retail Price		£801	£832	£852	£873	£893	£934	£1,010
Panel model (Optional)		40VPD016L7EQEE	40VPD016L7EQEE	40VPD016L7EQEE	40VPD016L7EQEE	40VPD016L7EQEE	40VPD024L7EQEE	40VPD024L7EQEE
Panel Retail Price		£169	£169	£169	£169	£169	£199	£199
Retail Price (Inc. Panel)		£970	£1,001	£1,021	£1,042	£1,062	£1,133	£1,209

Rated Cooling capacity	kW	1.5	2.2	2.8	3.6	4.5	5.6	7.1
Rated Heating capacity	kW	1.7	2.5	3.2	4.0	5.0	6.3	8.0
Sound pressure level (H/M/L)	dB(A)	26/22/19	27/23/20	27/23/20	30/27/24	32/29/26	33/30/27	36/33/30
Max external Static pressure	Pa	30	30	30	30	30	30	30
Dimensions (HxWxD) indoor	mm	185x850x420	185x850x420	185x850x420	185x850x420	185x850x420	185x1170x420	185x1170x420
Dimensions Outlet (HxWxD) panel	mm	100x890x190	100x890x190	100x890x190	100x890x190	100x890x190	100x1210x190	100x1210x190
Dimensions Inlet (HxWxD) panel	mm	32.4x890x290.5	32.4x890x290.5	32.4x890x290.5	32.4x890x290.5	32.4x890x290.5	32.4x1210x290.5	32.4x1210x290.5
Weight indoor/panel	kg	17/4	18/4	18/4	18/4	19/4	23/5	24/5
Suggested Power supply	V-ph-Hz-A	220/240-1-50 - 6	220/240-1-50 - 6	220/240-1-50 - 6	220/240-1-50 - 6	220/240-1-50 - 6	220/240-1-50 - 6	220/240-1-50 - 10
Pipe Connections (Gas - Liquid)	inch	3/8 - 1/4	3/8 - 1/4	3/8 - 1/4	1/2 - 1/4	1/2 - 1/4	1/2 - 1/4	5/8 - 3/8



SLIM DUCTED



Turn to the experts



VRF Indoor Units - Standard Static Ducted

Indoor Unit		40VD005S-7S-QEE	40VD007S-7S-QEE	40VD009S-7S-QEE	40VD012S-7S-QEE	40VD016S-7S-QEE	40VD018S-7S-QEE
Indoor Unit Retail Price		£796	£816	£837	£862	£888	£944
Rated Cooling capacity	kW	1.5	2.2	2.8	3.6	4.5	5.6
Rated Heating capacity	kW	1.7	2.5	3.2	4.0	5.0	6.3
Sound pressure level (H/M/L)	dB(A)	29/27/25	30/28/25	30/28/25	31/29/27	32/30/28	33/31/29
Max external Static pressure	Pa	200	200	200	200	200	200
Dimensions (HxWxD)	mm	248x700x700	248x700x700	248x700x700	248x700x700	248x700x700	248x1100x700
Weight	kg	27	27	27	27	29	29
Suggested Power supply	V-ph-Hz-A	220/240-1-50 - 10	220/240-1-50 - 10	220/240-1-50 - 10	220/240-1-50 - 10	220/240-1-50 - 10	220/240-1-50 - 16
Pipe Connections (Gas - Liquid)	inch	1/2 - 1/4	1/2 - 1/4	1/2 - 1/4	1/2 - 1/4	1/2 - 1/4	1/2 - 1/4



Turn to the experts

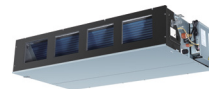


VRF Indoor Units - Standard Static Ducted (Continued)

Indoor Unit		40VD024S-7S-QEE	40VD028S-7S-QEE	40VD030S-7S-QEE	40VD038S-7S-QEE	40VD048S-7S-QEE	40VD054S-7S-QEE
Indoor Unit Retail Price		£985	£1,128	£1,235	£1,342	£1,434	£1,520
Rated Cooling capacity	kW	7.1	8.0	9.0	11.2	14.0	16.0
Rated Heating capacity	kW	8.0	9.0	10.0	13.0	16.3	18.0
Sound pressure level (H/M/L)	dB(A)	34/31/29	35/33/30	36/33/30	38/35/32	40/36/32	42/38/34
Max external Static pressure	Pa	200	200	180	180	180	180
Dimensions (HxWxD)	mm	248x1100x700	248x1100x700	248x1100x700	248x1500x700	248x1500x700	248x1500x700
Weight	kg	37	37	39	48	51	51
Suggested Power supply	V-ph-Hz-A	220/240-1-50 - 16	220/240-1-50 - 16	220/240-1-50 - 16	220/240-1-50 - 16	220/240-1-50 - 16	220/240-1-50 - 16
Pipe Connections (Gas - Liquid)	inch	5/8 - 3/8	5/8 - 3/8	5/8 - 3/8	5/8 - 3/8	5/8 - 3/8	5/8 - 3/8



Turn to the experts

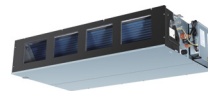


VRF Indoor Units - High Static Ducted

Indoor Unit		40VD007H-7S-QEE	40VD009H-7S-QEE	40VD012H-7S-QEE	40VD015H-7S-QEE	40VD018H-7S-QEE	40VD024H-7S-QEE	40VD028H-7S-QEE
Indoor Unit Retail Price		£1,194	£1,224	£1,235	£1,260	£1,347	£1,413	£1,469
Rated Cooling capacity	kW	2.2	2.8	3.6	4.5	5.6	7.1	8.0
Rated Heating capacity	kW	2.5	3.2	4.0	5.0	6.3	8.0	9.0
Sound pressure level (H/M/L)	dB(A)	30/25/23	30/25/23	32/29/26	32/29/26	32/29/26	33/29/25	33/29/25
Max external Static pressure	Pa	200	200	200	200	200	200	200
Dimensions (HxWxD)	mm	280x750x635	280x750x635	280x750x635	280x750x635	280x750x635	280x950x635	280x950x635
Weight	kg	29	29	29	29	29	34	34
Suggested Power supply	V-ph-Hz-A	220/240-1-50 - 10	220/240-1-50 - 10	220/240-1-50 - 16	220/240-1-50 - 16	220/240-1-50 - 16	220/240-1-50 - 16	220/240-1-50 - 16
Pipe Connections (Gas - Liquid)	inch	3/8 - 1/4	3/8 - 1/4	1/2 - 1/4	1/2 - 1/4	1/2 - 1/4	5/8 - 3/8	5/8 - 3/8



Turn to the experts



VRF Indoor Units - High Static Ducted (Continued)

Indoor Unit		40VD030H-7S-QEE	40VD036H-7S-QEE	40VD048H-7S-QEE	40VD054H-7S-QEE	40VD072H-7S-QEE	40VD096H-7S-QEE
Indoor Unit Retail Price		£1,663	£1,704	£1,877	£1,928	£2,902	£3,066
Rated Cooling capacity	kW	9.0	11.2	14.0	16.0	22.4	28.0
Rated Heating capacity	kW	10.0	12.5	16.0	18.0	25.0	31.0
Sound pressure level (H/M/L)	dB(A)	33/29/25	38/36/30	40/34/29	40/34/29	55/51/47	62/58/54
Max external Static pressure	Pa	200	200	200	200	250	250
Dimensions (HxWxD)	mm	280x950x635	280x1370x740	280x1370x740	280x1370x740	500x1330x895	500x1330x895
Weight	kg	34	54	54	54	103	103
Suggested Power supply	V-ph-Hz-A	220/240-1-50 - 16	220/240-1-50 - 16	220/240-1-50 - 16	220/240-1-50 - 16	220/240-1-50 - 16	220/240-1-50 - 20
Pipe Connections (Gas - Liquid)	inch	5/8 - 3/8	5/8 - 3/8	5/8 - 3/8	5/8 - 3/8	7/8 - 1/2	7/8 - 1/2



Turn to the experts



VRF Indoor Units - Flex Ceiling-Floor

Indoor Unit		40VC009F-7S-QEE	40VC012F-7S-QEE	40VC016F-7S-QEE	40VC018F-7S-QEE	40VC024F-7S-QEE
Indoor Unit Retail Price		£1,168	£1,184	£1,230	£1,362	£1,444
Rated Cooling capacity	kW	2.8	3.6	4.5	5.6	7.1
Rated Heating capacity	kW	3.2	4.0	5.0	6.3	8.0
Sound pressure level(H/M/L)	dB(A)	38/36/34	38/36/34	42/38/35	42/38/35	46/44/41
Dimensions (HxWxD)	mm	680x1000x230	680x1000x230	680x1000x230	680x1000x230	680x1330x230
Weight	kg	28	28	28	28	36
Suggested Power supply	V-ph-Hz-A	220/240-1-50 - 6	220/240-1-50 - 6	220/240-1-50 - 6	220/240-1-50 - 6	220/240-1-50 - 6
Pipe Connections (Gas - Liquid)	inch	3/8 - 1/4	1/2 - 1/4	1/2 - 1/4	1/2 - 1/4	5/8 - 3/8



Turn to the experts



VRF Indoor Units - Flex Ceiling-Floor (Continued)

Indoor Unit		40VC028F-7S-QEE	40VC030F-7S-QEE	40VC038F-7S-QEE	40VC048F-7S-QEE	40VC054F-7S-QEE
Indoor Unit Retail Price		£1,454	£1,464	£1,561	£1,592	£1,694
Rated Cooling capacity	kW	8.0	9.0	11.2	14.0	16.0
Rated Heating capacity	kW	9.0	10.0	12.5	16.0	18.0
Sound pressure level(H/M/L)	dB(A)	47/44/41	47/44/41	50/46/43	50/46/43	50/46/43
Dimensions (HxWxD)	mm	680x1330x230	680x1330x230	680x1650x230	680x1650x230	680x1650x230
Weight	kg	36	36	44	44	44
Suggested Power supply	V-ph-Hz-A	220/240-1-50 - 6	220/240-1-50 - 6	220/240-1-50 - 6	220/240-1-50 - 6	220/240-1-50 - 6
Pipe Connections (Gas - Liquid)	inch	5/8 - 3/8	5/8 - 3/8	5/8 - 3/8	5/8 - 3/8	5/8 - 3/8



Turn to the experts



VRF Indoor Units - Two-Way Console

Indoor Unit		40VL005B-7E-QEE	40VL007B-7E-QEE	40VL009B-7E-QEE	40VL012B-7E-QEE	40VL018B-7E-QEE
Indoor Unit Retail Price		£939	£1,158	£1,250	£1,337	£1,484
Rated Cooling capacity	kW	1.5	2.2	2.8	3.6	5.0
Rated Heating capacity	kW	1.7	2.6	3.2	4.0	5.5
Sound pressure level (H/M/L)	dB(A)	45/38/30	45/38/30	45/38/30	47/40/30	47/40/30
Dimensions (HxWxD)	mm	600x700x210	600x700x210	600x700x210	600x700x210	600x700x210
Weight	kg	15	15	15	15	15
Suggested Power supply	V-ph-Hz-A	220/240-1-50 - 6	220/240-1-50 - 6	220/240-1-50 - 6	220/240-1-50 - 6	220/240-1-50 - 6
Pipe Connections (Gas - Liquid)	inch	1/2 - 1/4	1/2 - 1/4	1/2 - 1/4	1/2 - 1/4	1/2 - 1/4



Turn to the experts



VRF Indoor Units - Console Recessed

Indoor Unit		40VL007R-7G-QEE	40VL009R-7G-QEE	40VL012R-7G-QEE
Indoor Unit Retail Price		£1,010	£1,061	£1,102
Rated Cooling capacity	kW	2.2	2.8	3.6
Rated Heating capacity	kW	2.5	3.2	4.0
Sound pressure level (H/M/L)	dB(A)	38/35/33	38/35/33	40/37/35
Max external Static pressure	Pa	30	30	30
Dimensions (HxWxD)	mm	624x1116x221	624x1116x221	624x1116x221
Weight	kg	29	29	29
Suggested Power supply	V-ph-Hz-A	220/240-1-50 - 10	220/240-1-50 - 10	220/240-1-50 - 10
Pipe Connections (Gas - Liquid)	inch	3/8 - 1/4	3/8 - 1/4	1/2 - 1/4



Turn to the experts

ACCESSORIES

Accessories

	Model	Description	Price
Wireless Controllers & Receivers			
Wireless Controllers & Receivers	40VCI67FQEE	Wireless controller	£36
	40VCIR7FQEE	Wireless controller receiver (ducts)	£33
Wired Controllers			
Wired Controllers	40VCW117FQEE	Simple wired controller	£77
	40VCW217FQEE	Standard Wired controller	£108
	40VCW317FQEE	Scheduling Wired Controller	£204
Central Controllers			
Central Controllers	40VCC837FQEE	Group Controller up to 64 IDU	£633
	40VCC617FQEE	Central Touchscreen controller 256 IDU	£1,291
	40VCC727FQEE	Central Controller Touch Screen - 512 IDU with Web browser & Multi language	£7,283
BMS, Gateways and Adapters			
BMS, Gateways and Adapters	40VCB217FQEE	Local BMS remote monitoring	£11,394
	40VCBB17FQEE	BMS control-BACnet gateway	£4,233
	40VCBL17FQEE	BMS control-Lonworks gateway	£2,576



Turn to the experts

ACCESSORIES

Accessories (Continued)

	Model	Description	Price
BMS, Gateways and Adapters			
BMS, Gateways and Adapters (Continued)	40VCBK17FQEE	BMS control - KNX gateway up to 8 IDU	£5,896
	40VCBK27FQEE	BMS control - KNX gateway up to 16 IDU	£8,609
	40VCBK37FQEE	BMS control - KNX gateway up to 64 IDU	£16,560
	40VCCR17FQEE	Protocol adapter	£291
	40VCB117FQEE	Local BMS Control	£689
	40VCBM17FQEE	Protocol & electricity data collection adapter	£317
	40VCCX17FQEE	Protocol adapter (128 IDU) - for touchscreen 512 IDU	£791
	40VCC727FQEE	Central controller Touch Screen - 512 IDU with Web browser & Multilanguage	£7,283
Branch Kits			
Branch Kits	40VJ012M7-HQEE	Branch Kit <33.5kW (For 2-pipe HP system)	£92
	40VJ018M7-HQEE	Branch Kit < 33.5-50.6kW> (for 2-pipe HP system)	£105
	40VJ026M7-HQEE	Branch Kit < 50.6-73kW> (for 2-pipe HP system)	£130
	40VJ048M7-HQEE	Branch Kit < 73-135kW > (for 2-pipe HP system)	£200
	40VJ072M7-HQEE	Branch Kit < 135- 204kW> (for 2-pipe HP system)	£306
	40VJ052G7-HQEE	ODU branch connection (for 2 pipe heat pump system, 2 ODU)	£146



Turn to the experts

ACCESSORIES

Accessories (Continued)

	Model	Description	Price
Branch Kits			
Branch Kits (Continued)	40VJ078G7-HQEE	ODU branch connection (for 2 pipe heat pump system, 3 ODU)	£326
	40VJ044G7-RQEE	Outdoor branch connection (for 3 pipe system, 2 ODU)	£217
	40VJ066G7-RQEE	Outdoor branch connection (for 3 pipe system, 3 ODU)	£513
	40VJ088G7-RQEE	Outdoor branch connection (for 3 pipe system, 4 ODU)	£883
	40VJ012M7-RQEE	Branch Kit <33.5kW (for 3-pipe system)	£196
	40VJ018M7-RQEE	Branch Kit< 33.5-50.6kW> (for 3-pipe system)	£204
	40VJ026M7-RQEE	Branch Kit < 50.6-73kW> (for 3-pipe system)	£246
	40VJ048M7-RQEE	Branch Kit < 73-135kW > (for 3-pipe system)	£380
	40VJ072M7-RQEE	Branch Kit < 135- 204kW> (for 3-pipe system)	£672
Facia Panels			
Facia Panels	40VPU054R7EQEE	Round-way Cassette Panel - standard	£271
	40VPU054A7EQEE	Round-way Cassette Panel with presence sensor	£516
	40VPU018C7SQEE	Compact 4 -Way - Panel	£245
	40VPU01827GQEE	2 Way Cassette - Panel	£444
	40VPU01217EQEE	One-Way Cassette Panel	£322



Turn to the experts

ACCESSORIES

Accessories (Continued)

	Model	Description	Price
Facia Panels			
Facia Panels (Continued)	40VPD016L7EQEE	Slim duct - DC panel up to 16k	£169
	40VPD024L7EQEE	Slim duct - DC panel 18 to 24k	£199
Filters			
Filters	40VFC018F7-QEE	PM2.5 filter Flex Ceiling floor	£11
	40VFC054F7-QEE	PM2.5 filter Flex Ceiling floor	£11
	40VFK030S7-QEE	PM2.5 3M filter Highwall	£46
Service Tools			
Service Tools	40VCTOOLQEE	Carrier Service Monitoring tool	£276



Turn to the experts

UK Headquarters
Carrier Solutions UK Ltd
Elite House,
Guildford Road,
Leatherhead,
Surrey
KT22 9UT

Tel: 0330 236 8630
marketing.uk@toshiba-ac.com

Plymouth
Carrier Solutions UK Ltd
Porsham Close,
Belliver Industrial Estate,
Plymouth,
Devon
PL6 7DB

Tel: 0330 236 8630
sales.support@toshiba-ac.com

Manchester
Carrier Solutions UK Ltd
Unit 15 S:Park Business Park
Hamilton Road,
Stockport,
Greater Manchester
SK1 2AE

Tel: 0330 236 8630
orders@toshiba-ac.com

www.carrier.com

05/2024 UK&I

Carrier is committed to continuously improving its products to ensure the highest quality and reliability standards, and to meet local regulations and market requirements. All features and specifications are subject to change without prior notice.

©2024 Carrier. All Rights Reserved.